

3 CORE EQUIPMENT 大核心设备

智能有机垃圾就地处理设备

INTELLIGENT ORGANIC WASTE DISPOSAL EQUIPMENT

为您提供专业的有机垃圾处理解决方案

PROVIDE YOU WITH PROFESSIONAL ORGANIC WASTE DISPOSAL SOLUTIONS



智能餐厨废弃物就地处理设备



农贸市场有机垃圾就地处理设备



中型有机垃圾集中处理站

DIRECTORY

目录

01 - 02	企业概况 COMPANY PROFILE	33- 36	配套双轴撕碎机 DOUBLE SHAFT SHREDDER
03 - 04	应用背景 APPLICATION BACKGROUND	37- 38	配套污水处理系统/除臭系统 SEWAGE TREATMENT/ DEODORIZATION SYSTEM
05 - 10	技术实力 TECHNICAL STRENGTH	39 - 40	智能一体化移动设备房 INTELLIGENT INTEGRATED MOBILE DEVICE ROOM
11 - 14	智能餐厨废弃物就地处理设备 INTELLIGENT FOOD WASTE DISPOSAL EQUIPMENT	41 - 42	智能化控制管理系统 INTELLIGENT CONTROL MANAGEMENT SYSTEM
15 - 18	农贸市场有机湿垃圾就地处理设备 MARKET ORGANIC WET DISPOSAL EQUIPMENT	43 - 44	多元售后 MULTIVARIATE AFTER
19 - 24	中型有机垃圾集中处理站 MEDIUM ORGANIC WASTE CENTRALIZATION STATION	45 - 46	荣誉资质 HONORS QUALIFICATION
25 - 28	配套高效一体化餐饮油水分离设备 INTEGRATED CATERING OIL-WATER SEPARATION EQUIPMENT	47- 50	工程应用实例 ENGINEERING APPLICATION EXAMPLES
29 - 32	配套双螺旋连续式压榨机 DOUBLE SCREW CONTINUOUS PRESS	50 - 54	媒体报道及艺迈愿景 MEDIA REPORT AND YIMAI VISION

关于艺迈

上海艺迈实业有限公司是一家集设备研发、生产和销售为一体的高新技术企业，与同济大学环境科学与工程学院强强联合，致力于为用户提供系统化的智慧城市垃圾分类体系的构建和运维服务，主要包含方案设计、智能装备制造（智能餐厨废弃物就地处理装备、餐饮废水油水分离和污水提升一体化设备、一体化GRP预制泵站、给排水成套设备以及各类电机、水泵等节能产品），以及专业的技术咨询与维护服务；生产基地坐落于上海市金山工业经济开发区，交通便捷。

艺迈秉承着务实的工作作风和诚信负责的价值观念，现已成为同行业中的佼佼者。公司在全国各省市均设有分支机构，综合实力在国内名列前茅，并在业界赢得了良好的声誉。

公司目前拥有包括激光式手持光谱仪、大型激光切割机、自动焊接机在内的各类生产、检测设备200余台套，现已拥有几十项国家专利，并与同济大学环境科学与工程学院合作建立“同济环境-艺迈联合实验室”及“同济大学-上海艺迈实践教育基地”，并授予我司“同济大学‘卓越计划’校企联盟单位”称号；同时，艺迈还荣获上海市高新技术企业、上海市名牌、上海市守合同重信用单位、AAA信用等级企业以及五星级售后服务企业等多项荣誉称号。艺迈产品现已广泛涉及环保、民建、市政工程、房地产等多个领域。公司现已通过ISO 9001：2008质量管理体系认证、GB/T 24001-2004/ISO14001：2004环境管理体系认证、GB/T 28001-2011/OHSAS18001：2007职业健康安全管理体系认证、电气产品3C认证、各类产品节能、节水及环保认证等资质证书；产品畅销国内市场并远销海外市场。

艺迈愿以“专注提高，专业服务”的经营理念，为您提供最优质的产品和最合理的解决方案，实现共赢与发展。



ABOUT YIMAN



Shanghai Yimai Industrial Co., Ltd. is a high-tech enterprise integrating equipment R & D, production and sales. It is a strong joint with the School of Environmental Science and Engineering of Tongji University and is committed to providing users with a systematic and intelligent city waste classification system. Operation and maintenance services, mainly including program design, intelligent equipment manufacturing (in-situ processing equipment for intelligent household food waste, integrated equipment for catering wastewater oil-water separation and sewage improvement, integrated GRP prefabricated pumping stations, complete water supply and drainage equipment, and various types of motors, Energy-saving products such as pumps), as well as professional technical consulting and maintenance services; the production base is located in Shanghai Jinshan Industrial Economic Development Zone, with convenient transportation.

Adhering to the values of pragmatic work style and integrity and responsibility, Yimai has become a leader in the industry. The company has branches in various provinces and cities across the country, and its comprehensive strength ranks among the best in the country, and has won a good reputation in the industry.

The company currently has more than 200 sets of various production and testing equipment including laser handheld spectrometers, large laser cutting machines, automatic welding machines, and now has dozens of national patents, and cooperates with the School of Environmental Science and Engineering of Tongji University Established "Tongji University-Shanghai Artmai Practice Education Base" and "Tongji Environment-Artmai Joint Laboratory", and awarded our company the title of "Tongji University 'Excellence Plan' School-Enterprise Alliance Unit"; The city's high-tech enterprises, Shanghai famous brand, Shanghai contract-abiding and credit-honoring unit, AAA credit rating enterprise, five-star after-sales service enterprise and many other honorary titles.

Yimai products are now widely involved in environmental protection, civil construction, municipal engineering, real estate and other fields. The company has passed ISO 9001: 2008 quality management system certification, GB / T 24001-2004 / ISO14001: 2004 environmental management system certification, GB / T 28001-2011 / OHSAS18001: 2007 occupational health and safety management system certification, electrical product 3C certification, Qualification certificates such as energy-saving, water-saving and environmental protection certification of various products; the products are sold well in the domestic market and exported to overseas markets.

Yimai is willing to provide you with the best quality products and the most reasonable solutions with the business philosophy of "focus on improvement and professional service" to achieve win-win and development.



垃圾处理现状

GARBAGE DISPOSAL STATUS QUO

目前，我国600多个城市中近三分之二的城市被垃圾问题所困扰，堆存的垃圾总量达70亿吨，垃圾已经侵蚀掉我国80万亩的土地，在土地资源日趋紧张的今天，“垃圾围城”不仅带来严重的资源浪费，更为人类社会带来严重的环境问题。

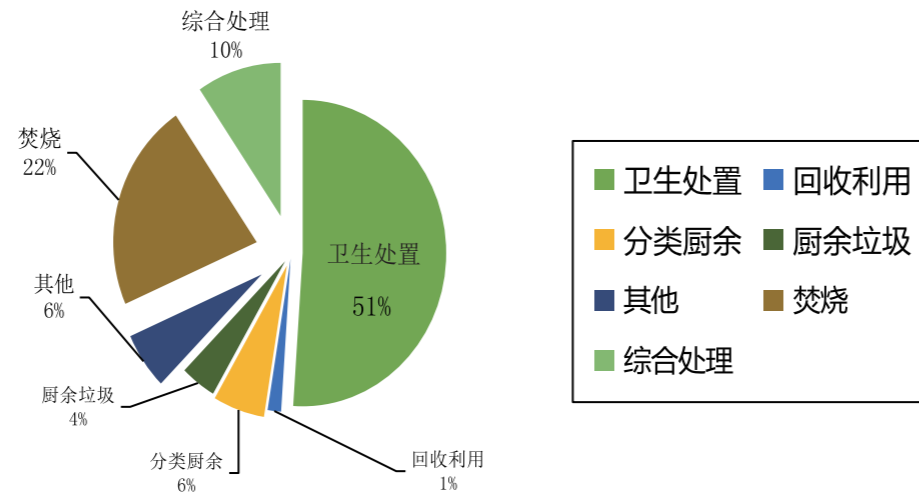
特别地，餐厨垃圾作为一种兼具资源和环境污染双重性的固体废弃物，其产生量约已占到生活垃圾总量的46-52%。我国餐厨废弃物具有高水分、高油、高盐、高有机物质、易腐败等特征，如果不能在产生后得到及时处理，尤其在夏季高温时节更容易加速餐厨垃圾的腐败，不仅丧失了其作为资源性、变废为宝的可能性，更为环境带来了不良影响，滋生病菌、影响市容环境卫生，还存在一定的病菌传播及公共卫生防疫风险。同时，餐厨垃圾与其他生活垃圾混合后，其本身不但未能得到及时有效的处理，还为其他生活垃圾的处理带来了麻烦与困扰。

At present, nearly two-thirds of China's more than 600 cities are plagued by the problem of waste. The total amount of garbage piled up amounts to 7 billion tons. Waste has eroded 800,000 mu of land in China. Garbage and serious waste of resources, not only the human society bring serious environmental problems.

In particular, household food waste as a kind of solid waste of both resources and environmental pollution duality, its production has accounted for about 46-52% of the total daily life garbage in our country of eat hutch waste oil with high water high in salt and organic matter characteristics such as corruption and easily, if you can't get timely treatment after produced, especially in the summer high temperature season are more likely to accelerate the eat hutch garbage corruption, not only lost its as a resource into the possibility of more environment has brought bad influence, breeding ground for germs, influence city's appearance environment health, there are certain risk spreading germs and public health epidemic prevention at the same time, eat hutch garbage mixes with other household waste, its itself not only failed to get timely and effective treatment, also for other living garbage, cause trouble and obsession.

垃圾越来越多，我们应该怎么做？

There is more and more rubbish., What should we do

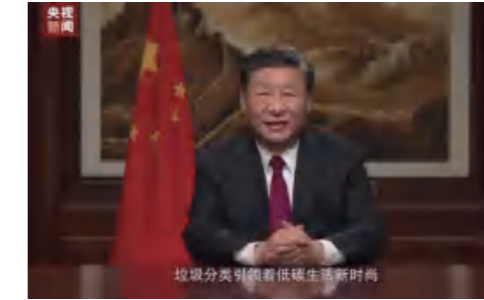


如果不进行有效的处置，50年后居住在这座城市里的居民，将不得不住在自己制造的垃圾之上，要想保住家园，唯一的解决之道就是打一场势在必行却又艰苦卓绝的战争-**垃圾分类**。

Without effective disposal, people living in this city in 50 years' time will have to live on top of their own rubbish. The only way to save their homes is to fight an inevitable but arduous war on —**GARBAGE SORTING**

政策导向

GARBAGE DISPOSAL STATUS QUO



- ▶ 2016年国管节能办发布《关于在中央和国家机关推进餐厨垃圾就地资源化处理的通知》，将在中央及国家机关及其直属单位推行餐厨垃圾就地资源化处理。
In 2016, the State Administration for Energy Conservation issued the 《Notice on Promotion The On-site Resource processing of Household Food waste in central and State Organs》, which will be implemented in central and state organs and their directly affiliated units Local resource processing
- ▶ 2017年6月，国家机关事务管理局、住房和城乡建设部、国家发展和改革委员会、中共中央宣传部及中国中央直属机关事务管理局五部委联合发文，鼓励日就餐人数1000人以上的单位安装餐厨垃圾就地资源化处理设备。
In June 2017, five ministries and commissions under the National Government Offices Administration, the Ministry of Housing and Urban-Rural Development, the National Development and Reform Commission, the Publicity Department of the CPC Central Committee, and the Government Offices Administration directly under the CPC Central Committee jointly issued a document encouraging units with more than 1,000 people eating at the dining room to install equipment for on-site recycling of Household Food waste.
- ▶ 2018年10月，国务院办公厅印发《国务院办公厅关于进一步做好非洲猪瘟防控工作的通知》，通知指出，各地应加强管理，做到“泔水”不出门。
In October 2018, the General Office of the State Council issued the 《Notice of the General Office of the State Council on Further Improving the Prevention and control of African swine fever》, stating that local governments should strengthen management to ensure that "slops" do not go out.
- ▶ 2019年1月31日，上海市十五届人大二次会议高票通过《上海市生活垃圾管理条例》，并于今年7月1日起正式施行，意味着上海垃圾分类工作在探路20多年后，终于纳入了法治框架。
On January 31, 2019, the Second session of the 15th Shanghai Municipal People's Congress passed the 《Shanghai Municipal Solid Waste Management Regulations with an overwhelming vote》, which took effect on July 1st this year. This means that after more than 20 years of exploration, garbage classification in Shanghai has finally been brought into the legal framework.
- ▶ 2019年6月特制定《上海市农贸市场、标准化菜市场湿垃圾就地处理设施配置》的标准出台。
In June 2019, the standards of 《Shanghai Farmers' Market and Standardized Household Food Waste On-site Treatment Facilities》 were promulgated.
- ▶ 2020年习总书记在新年致辞中强调指出“垃圾分类引领着低碳生活新时尚”。
President Xi emphasized that “garbage classification leads the new fashion of low-carbon life” In his New Year's Speech in 2020.

TOP-NOTCH RESEARCH TEAM

顶尖一流的科研团队

与上海大学吴明红院士建立院士工作站

COOPERATION WITH ACADEMICIAN WU MINGHONG TO ESTABLISH ACADEMICIAN WORKSTATION



吴明红院士简介：

理学博士，教授，博士生导师，现任上海大学副校长。长江学者特聘教授，国家杰出青年基金，上海大学国家211重点学科环境工程学科带头人，俄罗斯科学院外籍院士，俄罗斯自然科学院外籍院士。

我司已与上海大学副校长吴明红院士达成合作意向，共同建立院士专家工作站，为构建专业的系统化餐厨垃圾处理体系奠定了强大的科研基础。

Neo-confucianism, Ph.D., professor, doctoral supervisor, he is now vice President of Shanghai university of Yangtze river scholars distinguished professor, national outstanding youth fund, national 211 key environmental engineering disciplines leaders at Shanghai university, institute of Russian foreign academicians, foreign academician of the Russian academy of natural sciences .

we have reached an agreement with the member of Shanghai university vice-chancellor ming-hong wu, jointly establish a member of expert workstation, to build a professional systematization of eat hutch garbage disposal system laid the foundation the formidable scientific research.

强强联手——艺迈-同济大学产学研合作

JOINED FORCES
YIMAI—TONGJI UNIVERSITY PRODUCTION AND RESEARCH COOPERATION

我司于2015年与同济大学正式签订卓越人才培养及产学研合作协议，并于2018年1月22日与同济大学环境科学与工程学院建立全面的产学研战略合作关系，建立专业的同济环境-艺迈联合实验室，展开技术转让、成果转化、技术攻关等深度合作。

In 2015, our company formally signed an agreement with tongji university on excellent talent training and industry-university-research cooperation. On January 22, 2018, our company established a comprehensive industry-university-research strategic cooperation relationship with the school of environmental science and engineering of tongjiuniversity, established a professional tongji environment-emei joint laboratory, and carried out in-depth cooperation on technology transfer, achievement transformation and technology breakthrough.



技术引领 — 主编三项标准

TECHNOLOGY LEADING

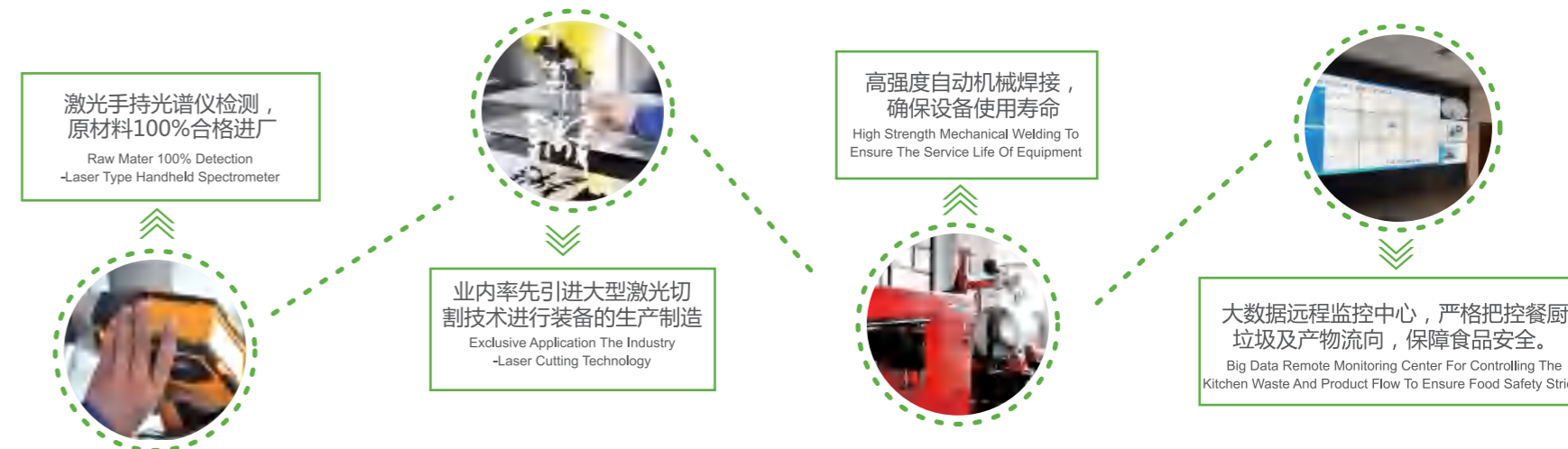
我司现已获批成为2018年上海市“智能餐厨废弃物就地处理装备标准化试点单位”，并与行业内权威专家共同起草主编智能餐厨废弃物就地处理设备的产品标准、工程应用标准及工程应用图集。

Yimai has been approved as the 2018 Shanghai "intelligent food waste disposal equipment standardization pilot unit", and is working with industry experts to draft and edit the product standards, engineering application standards and engineering application atlas of intelligent food waste disposal equipment.



一流的加工工艺

FIRST-CLASS PROCESSING TECHNOLOGY



设备概述

SUMMARY OF EQUIPMENT

YMGCC智能餐厨废弃物(有机湿垃圾)就地处理设备由上海艺迈实业有限公司与同济大学联合研发而成。该机整体部件采用优质不锈钢材料制造，结构布局紧凑合理，外形美观。该产品具有技术先进、自动智能化程度高、节能环保等显著优点。

The YMGCC intelligent household food waste disposal equipment is developed by Shanghai Yimai Industrial Co., LTD. And Tongji University. The whole part is made of high quality stainless steel, and it has compact structure and reasonable appearance. The product has obvious advantages such as advanced technology, high automaticity, energy saving and environmental protection.



党政机关

PARTY AND GOVERNMENT ORGANS

国管节能[2017]180号文件
机关单位带头实现餐厨垃圾
就地处理，做到日产日清。

State administration of energy conservation
[2017] no. 180 document office unit to take
the lead in the implementation of on-site
treatment of kitchen waste, to achieve daily
cleaning.



学校

SCHOOL

绿色校园、生态校园。

Green Ecological Campus



中型垃圾中转站

MEDIUM-SIZED WASTE
TRANSFER STATION

模块智能、因地制宜、按需制宜。

Module intelligence is tailored to
local conditions and needs



医院

HOSPITAL

就地处理、杜绝二次污染
与病菌传播。

On-site treatment can prevent secondary
contamination and spread of germs



乡村

VILLAGE

美丽乡村的垃圾分类
处理模式。

The garbage classification and treatment
mode of beautiful countryside



农贸市场

FARMERS' MARKET

先减量，再消毒、资源化
处理，源头严控各类疫情
传播风险。

First, reduce the amount, and then disinfection
and recycling treatment, the source of all kinds
of epidemic risk strictly control the spread

适用范围

SPHERE OF APPLICATION

设备主要适用于机关、部队、学校、农贸市场、企业食堂、酒店餐厅、居民小区，以及区域垃圾中转站等需要及时就地处理餐厨垃圾和有机湿垃圾的场所，可从源头真正实现垃圾的减量化、资源化和无害化处理。

The equipment is mainly suitable for organs, troops, schools, farmers' market, enterprise canteens, hotel restaurants, residential areas, as well as regional waste transfer stations and other places that need to deal with Household food waste and organic wet waste in a timely manner, which can truly realize the reduction, resource and harmless disposal of waste from the source.

YMGCC智能餐厨废弃物就地处理设备

INTELLIGENT FOOD WASTE DISPOSAL EQUIPMENT



每日可处理2-3次，垃圾即时处理不变质

常规情况下处理一次仅需4~7个小时，餐厨垃圾就地、就近即可减量资源化处理，杜绝腐败异味，二次污染。
Under normal circumstances, only 4 to 7 hours are needed for a single treatment, and the amount of household food waste can be reduced and treated locally, so as to eliminate corruption, odor and secondary pollution

参照国际湿热杀菌标准，有机垃圾源头严控各类疫情传播风险

按照国际公共卫生防疫要求，140-160°C高温条件下，垃圾中残存的细菌、病毒等微生物细胞的蛋白质、酶及核酸永久破坏，使其彻底丧失生理活性，从而使细胞产生不可逆死亡。
According to the requirements of international public health and epidemic prevention, protein enzymes and nucleic acids of microbial cells such as bacteria and viruses remaining in garbage are permanently destroyed under 140-160 high temperature conditions, resulting in complete loss of physiological activity and irreversible cell death.

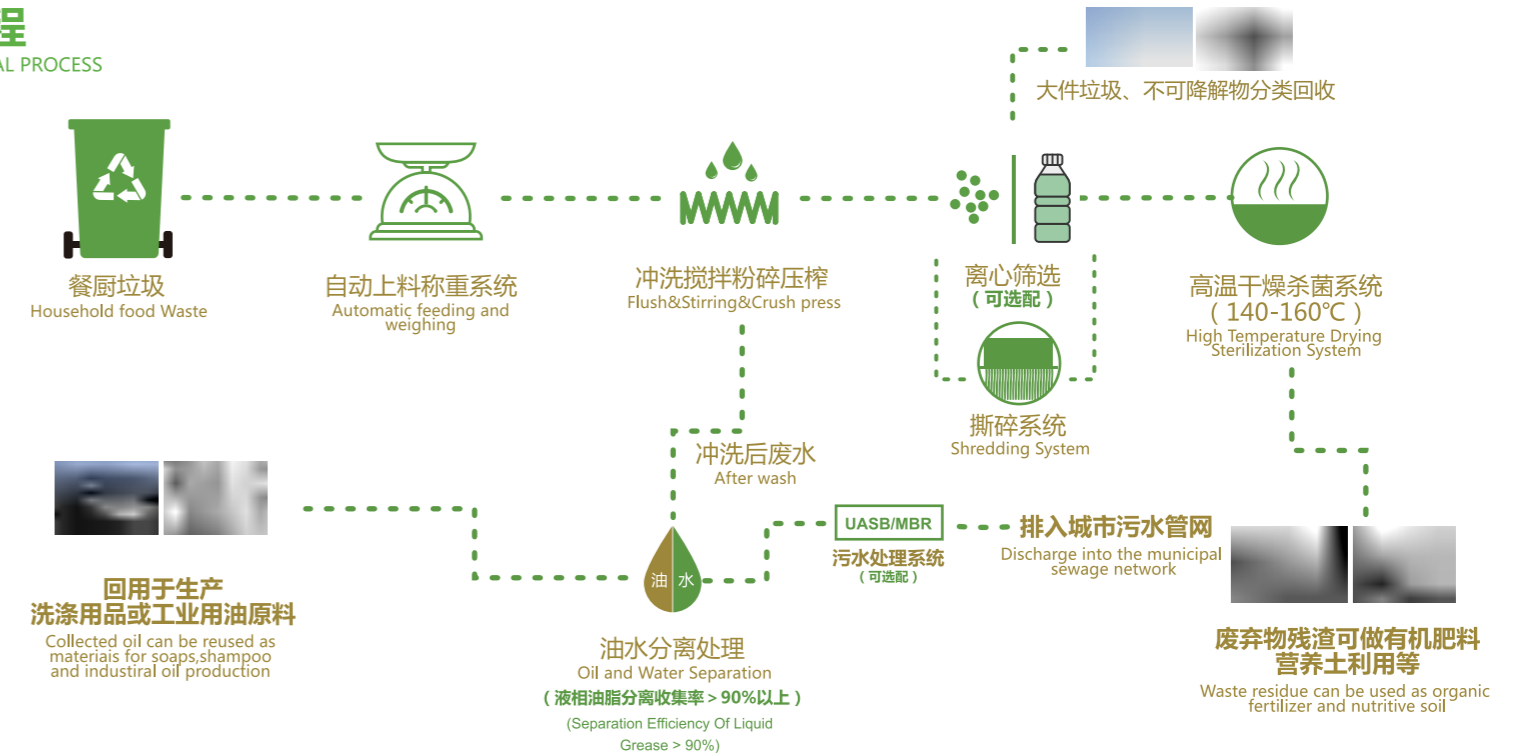
占地面积小，能源梯级利用

可适应狭窄等特殊现场，灵活方便；高温蒸汽回用助力加温烘干、油水分离保温，实际能耗较同类产品相比可节能40%以上。
Can adapt to narrow and other special site, flexible and convenient; High temperature steam recovery power heating drying oil and water insulation, the actual energy consumption compared with similar products can save more than 40%

八大系统 EQUIPMENT EIGHT SYSTEMS



工艺流程 TECHNOLOGICAL PROCESS



名称		智能餐厨废弃物就地处理设备														
型号		服务人数 (人)	单次处理量 (kg/次)	单次处理 时间 (h)	外观尺寸			设备占地 面积 (m ²)	有效工作 高度 (mm)	装备质量 (Kg)	运行最大 用电功率 (kW)	电源电压 (V)	能耗 (kwh/kg)	减量率 (%)	油水分离 效率 (%)	噪音值 (dB)
					长度L(mm)	宽度W(mm)	高度H(mm)									
号	YMGCCS-150	≤300	150	3~5	2100	1500	1700	3.15	2600	2100	13.5	三相380V 50Hz	0.12-0.15	90%以上	≥90	<65
	YMGCCS-300	300~800	300	3~5	2400	1650	2000	3.96	2900	2500	20					
	YMGCCS-500	800~1500	500	3~5	2400	1650	2100	3.96	3000	2600	20					
	YMGCCS-1000	1500~3000	1000	5~7	2600	1800	2100	4.68	3000	3000	30					
	YMGCCS-2000	3000~6000	2000	6~8	3000	2400	2100	7.2	3000	4800	45					
	YMGCCS-5000	6000~10000	5000	8~10	6000	2800	2400	16.8	3200	6200	65					

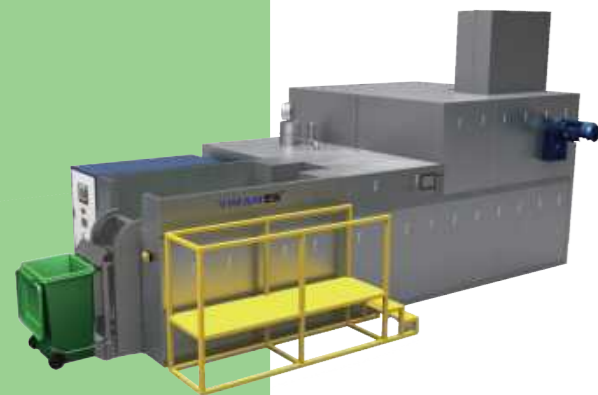
- 备注：**
1. 该设备适用于餐厨垃圾分类相对彻底的工况，选用时应根据项目类型选择单次处理规模，如学校、医院等可按照人均垃圾产生量 0.2-0.3kg/ (人·d)，而星级酒店、政府机关等则可按照人均垃圾产生量0.1-0.2kg/ (人·d) 计算；
 2. 选择装备类型时必须考虑项目实际餐厨垃圾的组分，如水分、油分等特征物质含量，杂物量及杂物类型，遵循因地制宜、因况制宜的原则；
 3. 本表中外观尺寸、用电量等参数仅供选型时参考，实际运行中会因现场条件、垃圾组分等多种因素而有所不同；
 4. 装备为可拆卸框架结构，安装方便；并配备有智能控制系统，运行参数及状态可通过网络传输至远程监控中心，严格监控垃圾及废油、残渣流向，确保食品安全。
 5. 为确保装备运行安全，严禁金属、石块、木棍、调羹、刀叉等废弃物进入装备处理系统中。

名称		INTELLIGENT FOOD WASTE DISPOSAL EQUIPMENT														
MODEL		Service Number (persons)	Single processing capacity (kg/times)	Processing Time (hours)	Dimension			Area (m ²)	Working Height (mm)	Weight (Kg)	Full-load Electric Power (kW)	Voltage (V)	Electricity (kwh/kg)	reduction rate (%)	Oil&Water Separation Efficiency (%)	Noise Level (dB)
					Length(mm)	Width(mm)	Height(mm)									
号	YMGCCS-150	≤300	150	3~5	2100	1500	1700	3.15	2600	2100	13.5	AC380V 50Hz	0.12-0.15	90%以上	≥90	<65
	YMGCCS-300	300~800	300	3~5	2400	1650	2000	3.96	2900	2500	20					
	YMGCCS-500	800~1500	500	3~5	2400	1650	2100	3.96	3000	2600	20					
	YMGCCS-1000	1500~3000	1000	5~7	2600	1800	2100	4.68	3000	3000	30					
	YMGCCS-2000	3000~6000	2000	6~8	3000	2400	2100	7.2	3000	4800	45					
	YMGCCS-5000	6000~10000	5000	8~10	6000	2800	2400	16.8	3200	6200	65					

- Remark:**
1. The equipment is suitable for the household food waste which has been sorted. The selection of equipment should be based on the type of project to, For example, schools and hospitals can select the scale of the single process according to 0.2-0.3kg/ (person.d); Hotels and government agencies can select the scale according to 0.1-0.2kg/ (person.d).
 2. When choosing the equipment type, the component of the actual food waste must be considered, such as moisture, oil grading, sundry types and content. The processing plan should be chosen according to different circumstances.
 3. In this table, the appearance, size, power consumption and other parameters are for reference only in type selection, The actual operation will be different due to the conditions of the scene, the composition of garbage and other factors.
 4. The equipment is equipped with removable integral frame structure, and an intelligent control system, The operating parameters and status can be transmitted to the remote monitoring center via the network. So we can strictly monitor the circulation way of waste, oil and residue to ensure food safety.
 5. In order to ensure the safe operation of equipment, metal waste is strictly prohibited into the equipment.

YMHCC农贸市场有机垃圾就地处理设备

ORGANIC WET WASTE DISPOSAL EQUIPMENT IN MARKET



处理时间快

常规情况下处理一次仅需8~10小时。
Under normal circumstances, it only takes 8-10 hours to process once.

源头减量90%以上

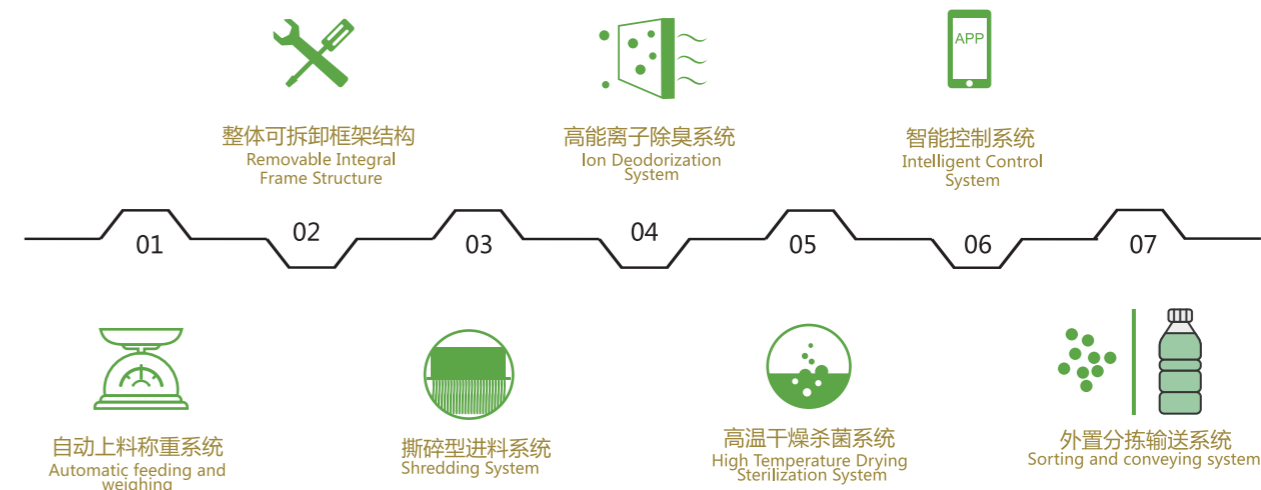
有机垃圾经特殊工艺，进入干燥仓进行超高温加热干燥使有机垃圾在源头减量达到90%以上。
After salt removal and oil removal by a special process, household food waste enters the drying bin for ultra-high temperature heating and drying, so that the amount of household food waste at the source can be reduced by more than 90%.

智能远程监控，“一键式”“一站式”服务

设备智能化自动运行，可远程监控维护、实时响应；专业服务、便捷省心。
Intelligent automatic operation of equipment, remote monitoring maintenance real-time response; Professional services convenient.

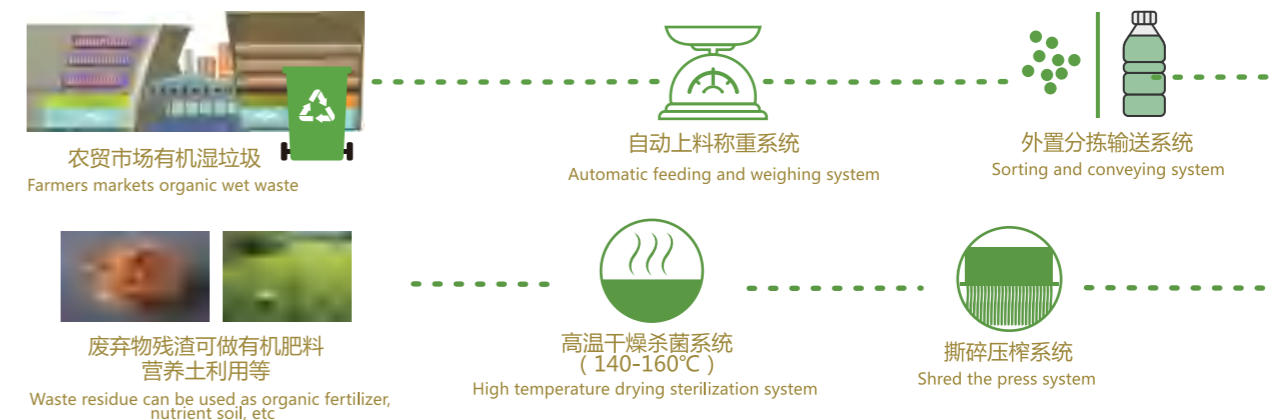
系统结构

EQUIPMENT STRUCTURE



工艺流程

TECHNOLOGICAL PROCESS



名称		农贸市场有机湿垃圾就地处理设备												
型号		单次处理量 (kg/次)	单次处理 时间 (h)	外观尺寸			设备占地 面积 (m ²)	有效工作 高度 (mm)	装备质量 (Kg)	运行最大 用电功率 (kW)	电源电压 (V)	能耗 (kwh/kg)	减量率 (%)	噪音值 (dB)
				长度L(mm)	宽度W(mm)	高度H(mm)								
型 号	YMHCCS-1000	1000	6~7	2600	1800	2100	4.68	3000	3000	30	三相380V 50Hz	0.12-0.15	90%以上	<65
	YMHCCS-2000	2000	7~8	3000	2400	2100	7.2	3000	4800	45				
	YMHCCS-3000	3000	7~8	3500	2850	2100	9.97	3000	5500	47.5				
	YMHCCS-5000	5000	8~10	6000	3000	2400	16.8	3200	6200	65				
	YMHCCS-10000	10000	8~10	6500	3200	2400	20.8	3200	7500	72				

NAME		ORGANIC WET WASTE DISPOSAL EQUIPMENT IN MARKET												
MODEL		Single processing capacity (kg/times)	Processing Time (hours)	Dimension			Area (m ²)	Working Height (mm)	Weight (Kg)	Full-load Electrc Power (kW)	Voltage (V)	Electricity (kwh/kg)	reduction rate (%)	Noise Level (dB)
				Length(mm)	Width(mm)	Height(mm)								
M O D E L	YMHCCS-1000	1000	6~7	2600	1800	2100	4.68	3000	3000	30	AC380V 50Hz	0.12-0.15	90%以上	<65
	YMHCCS-2000	2000	7~8	3000	2400	2100	7.2	3000	4800	45				
	YMHCCS-3000	3000	7~8	3500	2850	2100	9.97	3000	5500	47.5				
	YMHCCS-5000	5000	8~10	6000	3000	2400	16.8	3200	6200	65				
	YMHCCS-10000	10000	8~10	6500	3200	2400	20.8	3200	7500	72				

备注：

1. 该设备适用于垃圾分类后农贸市场、果蔬批发等产生的果皮、菜叶及其他有机湿垃圾的就地减量资源化处理，设备选用时应根据有机湿垃圾的产生量选择相应处理规模；
2. 选择装备类型时必须考虑项目实际有机垃圾的组分，如水分、杂物量及杂物类型，遵循因地制宜、因况制宜的原则；
3. 本表中外观尺寸、用电量等参数仅供选型时参考，实际运行中会因现场条件、垃圾组分等多种因素而有所不同；
4. 装备为可拆卸框架结构，安装方便，并配备有智能控制系统，运行参数及状态可通过网络传输至远程监控中心，严格监控垃圾及废油、残渣流向，确保食品安全。
5. 为确保装备运行稳定，严禁金属类废物（如调羹、刀叉等）进入装备处理系统中。

Remark:

1. The equipment is suitable for the household food waste which has been sorted. The selection of equipment should be based on the type of project to , For example, schools and hospitals can select the scale of the single process according to 0.2-0.3kg/ (person.d); Hotels and government agencies can select the scale according to 0.1-0.2kg/ (person.d).
2. When choosing the equipment type, the component of the actual food waste must be considered, such as moisture, oil grading, sundry types and content. The processing plan should be chosen according to different circumstances.
3. In this table, the appearance, size, power consumption and other parameters are for reference only in type selection,The actual operation will be different due to the conditions of the scene, the composition of garbage and other factors.
4. The equipment is equipped with removable integral frame structure,and an intelligent control system,The operating parameters and status can be transmitted to the remote monitoring center via the network. So we can strictly monitor the circulation way of waste, oil and residue to ensure food safety.
5. In order to ensure the safe operation of equipment, metal waste is strictly prohibited into the equipment.

中型有机垃圾集中处理站

MEDIUM ORGANIC WASTE CENTRALIZATION STATION



因地制宜 因况制宜

我们坚持“柔性制造”的理念，遵循“因地制宜，因况制宜”的原则，为您提供专业的有机垃圾处理解决方案。
We adhere to the concept of flexible manufacturing, follow the principle of adapting measures to local conditions, according to the situation, to provide you with professional organic waste treatment solutions.

变废为宝，垃圾变资源

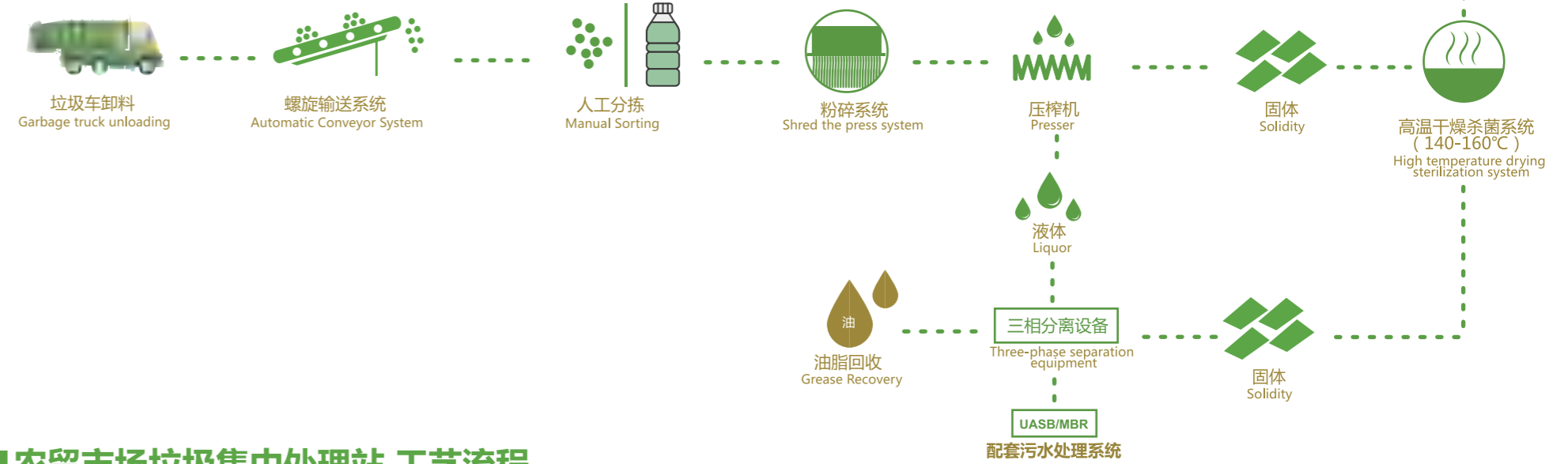
有机残渣可作为土壤改良、农田有机肥料、花木营养土，真正变废为宝。
The organic residue can be used as organic fertilizer for soil improvement in farmland, which can turn waste into treasure.

处理过程无异味

处理过程全密闭，真空负压状态下运行，无发酵产生的臭气。
The treatment process is completely airtight, running under vacuum and negative pressure, and there is no odor produced by fermentation.

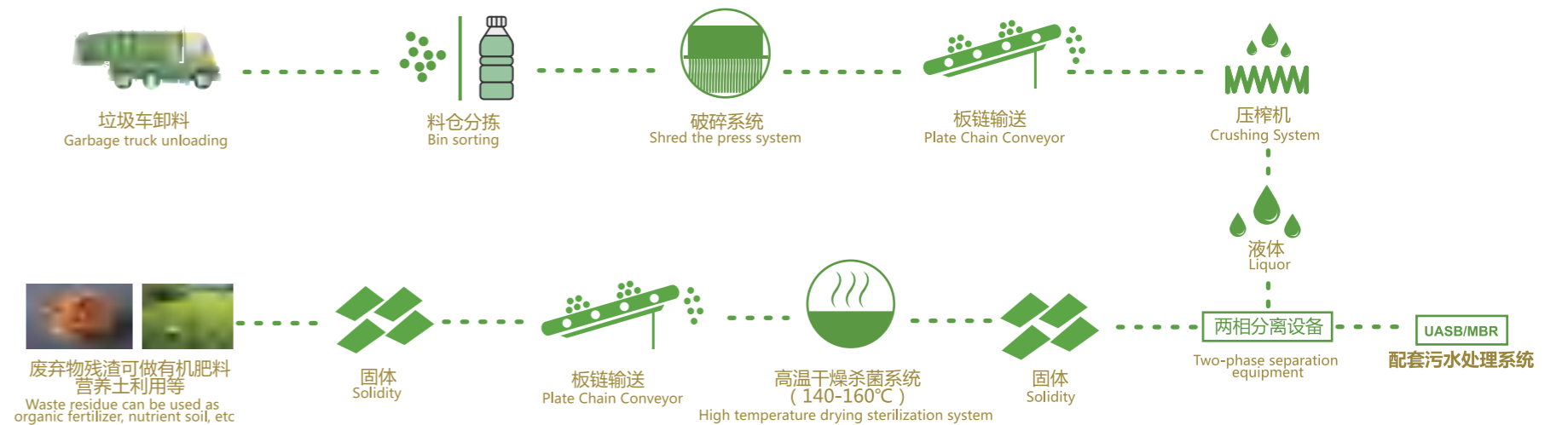
餐厨垃圾集中处理站 工艺流程

PROCESS FLOW OF A CENTRALIZED PROCESSING STATION FOR KITCHEN WASTE



农贸市场垃圾集中处理站 工艺流程

PROCESS FLOW OF GARBAGE CENTRALIZED TREATMENT STATION IN FARMERS' MARKET



名称		餐厨垃圾集中处理站							
型号		单次处理量 (t/次)	单次处理 时间 (h)	有效工作 高度 (mm)	运行最大 用电功率 (kW)	电源电压 (V)	能耗 (kwh/kg)	减量率 (%)	噪音值 (dB)
	YMGCCJ-5	5	15~22	4200	200	380V	0.25-0.4	90%以上	70-90
	YMGCCJ-10	10	15~22	4200	300				
	YMGCCJ-20	20	15~22	4200	600				
	YMGCCJ-30	30	15~23	4500	800				
	YMGCCJ-50	50	15~23	4500	1200				
	YMGCCJ-100	100	15~23	4500	2400				

名称		农贸市场垃圾集中处理站							
型号		单次处理量 (t/次)	处理时间 (h)	有效工作 高度 (mm)	运行最大 用电功率 (kW)	电源电压 (V)	能耗 (kwh/kg)	减量率 (%)	噪音值 (dB)
	YMHCCJ-5	5	15~22	3500	130	380V	0.2-0.35	90%以上	70-90
	YMHCCJ-10	10	15~22	3500	250				
	YMHCCJ-20	20	15~22	4000	450				
	YMHCCJ-30	30	15~23	4500	650				
	YMHCCJ-50	50	15~23	4500	900				
	YMHCCJ-100	100	15~23	4500	1800				

NAME		CENTRAL PROCESSING STATION FOR HOUSEHOLD FOOD WASTE							
MODEL		Single processing capacity (kg/times)	Processing Time (hours)	Working Height (mm)	Full-load Electrc Power (kW)	Voltage (V)	Electricity (kwh/kg)	reduction rate (%)	Noise Level (dB)
	YMGCCJ-5	5	15~22	4200	200	380V	0.25-0.4	90%以上	70-90
	YMGCCJ-10	10	15~22	4200	300				
	YMGCCJ-20	20	15~22	4200	600				
	YMGCCJ-30	30	15~23	4500	800				
	YMGCCJ-50	50	15~23	4500	1200				
	YMGCCJ-100	100	15~23	4500	2400				

NAME		FARMERS' MARKET GARBAGE CENTRALIZED DISPOSAL STATION							
MODEL		Single processing capacity (kg/times)	Processing Time (hours)	Working Height (mm)	Full-load Electrc Power (kW)	Voltage (V)	Electricity (kwh/kg)	reduction rate (%)	Noise Level (dB)
	YMHCCJ-5	5	15~22	3500	130	380V	0.2-0.35	90%以上	70-90
	YMHCCJ-10	10	15~22	3500	250				
	YMHCCJ-20	20	15~22	4000	450				
	YMHCCJ-30	30	15~23	4500	650				
	YMHCCJ-50	50	15~23	4500	900				
	YMHCCJ-100	100	15~23	4500	1800				

故障现象	可能产生的原因	排除方法
1. 震动剧烈，噪音大	a. 设备安装不平稳。 b. 设备连接处紧固螺栓松动。 c. 投料时混入大块固体物等杂物。 d. 筛选蛟龙轴承损坏。	a. 用水平仪等工具找正设备。 b. 检查设备连接处，紧固连接螺栓。 c. 停机检查进料斗，清除大块杂物。 d. 更换轴承，重新调整蛟龙。
2. 自动提升不工作	a. 信号传输失灵。 b. 液压系统缺油压力不足。 c. 电磁阀故障。	a. 检查信号传输系统，排除故障。 b. 添加液压油至额定量。 c. 检修或更换电磁阀。
3. 干燥室压力超标	a. 压力表损坏失灵。 b. 热回收滤网堵塞。 c. 减压阀损坏。 d. 真空泵管路堵塞或故障。	a. 检修或更换压力表。 b. 冲洗或更换滤网。 c. 检修或更换减压阀。 d. 排除堵塞，检修或更换真空泵。
4. 产出物含水率超标	a. 加热参数设置不合理。 b. 水分探测仪失灵。 c. 温度传感器故障。	a. 重新调整加热参数。 b. 检查水分探测仪，检修或更换。 c. 检查温度传感器，检修或更换。
5. 干燥室温度提升缓慢	a. 加热管故障。 b. 导热油蒸发，油量不足。 c. 热回收滤网堵塞。 d. 真空泵管路堵塞或故障。	a. 检修或更换加热管。 b. 添加导热油至额定量。 c. 冲洗或更换滤网。 d. 排除堵塞，检修或更换真空泵。

THE FAULT PHENOMENON	POSSIBLE REASONS	ELIMINATION METHOD
1. Violent Vibration, Loud Noise	a. The installation of equipment is not stable. b. The fastening bolts of the equipment joints are loose. c. Large debris is added when feeding. d. Bearing in the sorting system is damaged.	a. Use a horizontal instrument to find the right standard. b. Check the connection of the equipment and tighten the connection bolts. c. Stop and check the feeding hopper to remove bulk debris. d. Replace the bearing and rearrange the stranded dragon.
2. Automatic Feeding System Does Not Work.	a. Signal transmission failed. b. There is insufficient oil pressure in hydraulic system. c. Electrical valve failed.	a. Check signal transmission system and cancel the fault. b. Add hydraulic oil to rated quantity. c. Repair or replace the electric valve.
3. Excessive Pressure In Drying Room	a. The pressure gauge failed. b. The heat recovery filter is blocked. c. The pressure-reducing valve is damaged. d. Vacuum pump line blocked or failed.	a. Repair or replace the pressure gauge. b. Wash or replace the screen. c. Repair or replace the pressure-relief valve. d. Remove blockages, repair or replace the vacuum pump.
4. Excessive Water Rate Of Residue	a. Heating parameter setting is unreasonable. b. The moisture detector failed. c. Temperature sensor failed.	a. Readjust the heating parameters. b. Check the moisture detector, repair or replace. c. Check temperature sensor, repair or replace.
5. Temperature Of Drying Room Increases Slowly	a. Heating tube failed. b. Heat conduction oil has evaporated or the oil is insufficient. c. The heat recovery filter is blocked. d. Vacuum pump line blocked or failed.	a. Repair or replace the heating tube. b. Add heat conduction oil to rated quantity. c. Wash or replace the screen. d. Remove blockages, repair or replace the vacuum pump.

配套YMGY餐饮油水分离与污水提升一体化设备

SUPPORTING OIL-WATER SEPARATION AND SEWAGE UPGRADE INTEGRATED EQUIPMENT



油水分离效果好 HIGH EFFICIENCY OF OIL-WATER SEPARATION

该设备可依据现场工况采取曝气、维持最佳油水分离温度、保证充足的分离时间等多种途径，确保油水分离更加彻底；
The equipment can make sure high efficiency of oil-water separation by many methods, such as aeration, heating etc., according to local conditions.

防黏粘，抗腐蚀 ANTI-STICKING FUNCTION

该设备设有独特的反冲洗功能，定时清洗，可有效防止黏粘和堵塞；
The equipment can timely wash the key devices and the boxes to prevent sticking and clogged.

使用维护便捷 SIMPLE USE AND CONVENIENT MAINTENANCE

全自动智能化控制，集油、排渣桶内均装有传感器，自动发送消息提醒更换，快捷方便。
Intelligent control system can operate automatically, and there are liquid level sensors in oil and solid buckets, which transfer signals to the control system, and then the system will send messages to the managers for reminding to replace the containers.

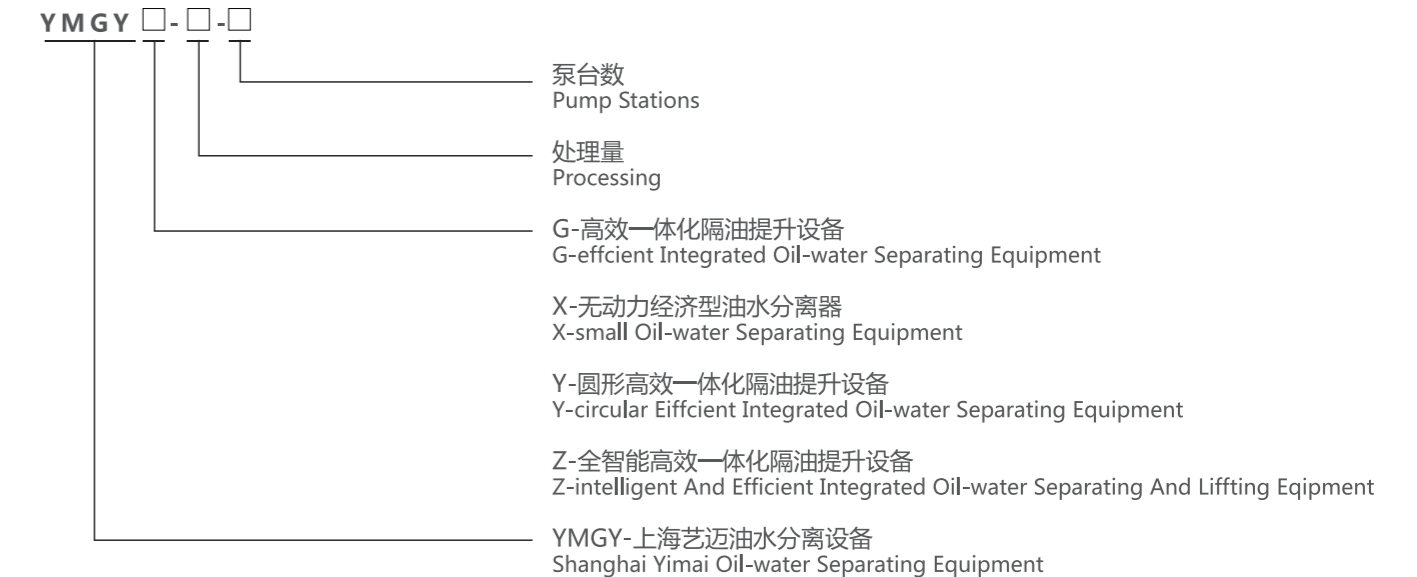
产品优势

PRODUCT ADVANTAGES

- 该设备现已广泛应用于各种不同规模的餐饮、酒店、学校、公寓等餐饮废水弃物排渣和排水管油水分离的场所，以及副食加工厂等需要油水分离和提升的场所。
The equipment is now widely used in catering, hotels, schools, apartments, non-staple food processing plants and other places where needs the oil-water separation and sewage lifting.
- 我们坚持“柔性制造”的理念，遵循“因地制宜、因况制宜”的原则，在设备选型及生产之前，我们都会安排专业的环保工程师到现场查勘，选择最佳的油水分离方案。
We insist on the “flexible manufacturing” concept. According to local conditions, our environmental engineers will survey the project site before equipment selection and production. And you will get the most appropriate solution plan.
- 该设备具有自动除渣压榨、定期排污及反冲洗、自动集放油、恒温加热除油以及污水提升等多项功能，设备全自动运行、智能化控制，管理维护非常方便。
The equipment has many functions, such as automatic slag crushing, regular sewage discharging, automatic oil collection, oil removal by constant temperature heating and sewage lifting, etc., and the equipment is fully automatic and intelligent, which makes the equipment use and maintenance more convenience.

TYPE DEFINITION

型号定义



名称		智能餐饮油水分离与污水提升一体化设备										
型号	处理量 (m³/h)	进口直径 (mm)	出口直径 (mm)	扬程 (m)	单泵功率 (kW)	设备外形尺寸			安装外形尺寸			
						长度L(mm)	宽度W(mm)	高度H(mm)	长度L(mm)	宽度W(mm)	高度H(mm)	
号	YMGY-2-2	2	150	100	5~30	0.75~7.5	1800	1000	1600	3000	2200	≥2400
	YMGY-5-2	5	150	100	5~30	0.75~7.5	1800	1000	1600	3000	2200	≥2400
	YMGY-10-2	10	150	100	5~30	0.75~7.5	1800	1000	1600	3000	2200	≥2400
	YMGY-20-2	20	150	100	5~30	0.75~7.5	2000	1200	1800	3200	2400	≥2600
	YMGY-35-2	35	150	150	5~30	0.75~7.5	2400	1400	1800	3600	2600	≥2600
	YMGY-50-2	50	200	150	5~30	0.75~7.5	3000	1600	1800	4200	2800	≥2600

- 备注：
1. 以上数据为标准设计，仅供参考，实际选型需依照项目现场工况优化确定；
 2. 进出水管道应具备足够的高度差，如现场不具备条件，可考虑下挖，或根据情况选用污水转换器；
 3. 固液分离可选择提篮格栅，或自动螺旋压榨等形式，根据污水中杂物量、杂物类型以及客户需求选择配置。

NAME		SUPPORTING OIL-WATER SEPARATION AND SEWAGE UPGRADE INTEGRATED EQUIPMENT										
MODEL	processing capacity (m³/h)	Inlet Diameter (mm)	Outlet Diameter (mm)	Lift (m)	Single Pump power (kW)	Equipment Dimensions			Mounting Dimensions			
						Length(mm)	Width(mm)	Height(mm)	Length(mm)	Width(mm)	Height(mm)	
号	YMGY-2-2	2	150	100	5~30	0.75~7.5	1800	1000	1600	3000	2200	≥2400
	YMGY-5-2	5	150	100	5~30	0.75~7.5	1800	1000	1600	3000	2200	≥2400
	YMGY-10-2	10	150	100	5~30	0.75~7.5	1800	1000	1600	3000	2200	≥2400
	YMGY-20-2	20	150	100	5~30	0.75~7.5	2000	1200	1800	3200	2400	≥2600
	YMGY-35-2	35	150	150	5~30	0.75~7.5	2400	1400	1800	3600	2600	≥2600
	YMGY-50-2	50	200	150	5~30	0.75~7.5	3000	1600	1800	4200	2800	≥2600

- Remark:
1. The above data are standard design for reference only, and the actual type selection shall be determined according to the optimization of project site conditions;
 2. The inlet and outlet water pipes should have enough height difference. If the existing site is not equipped, consider digging, or selecting sewage converter according to the situation;
 3. The solid and liquid separation can be in the form of basket grille or automatic screw press, etc. The configuration can be selected according to the quantity and type of sundries in the sewage and customer demands.

配套YMYZJ双螺旋连续式压榨机

SUPPORTING DOUBLE SCREW CONTINUOUS PRESS

螺旋压榨机是一种利用物理挤压方式进行脱水的设备，该设备由机架部分、传动部分、进料部分、压榨部分、液压阻料装置、集水槽、以及电器控制部分等组成。物料从进料箱进入设备，在螺旋绞龙的输送下受到逐级递进压力挤压，多余水分经过筛网由出液口排出，去水分物料在螺旋绞龙的继续输送下，顶开阻料装置由出料口排出设备。

Screw press is a way of using physical squeeze dehydration equipment, the equipment by the frame of transmission parts of feed of press parts of hydraulic resistance device set water tank and electric control part of the material from the feed box into the device, under the conveying of spiral twisted dragon escalate pressure extrusion, excess water through a sieve is being exhausted from port a liquid, water material under the spiral twisted continue to delivery of the dragon, the top open resistance device is being exhausted from port discharging device

The product has gone through hundreds of precise theoretical calculations and experimental tests

01 产品经过数百次精确理论推导计算和实验检验



02 总结众多用户在多年使用中真实效果反馈

Summarize the real effect feedback of many users in many years of use

Fully upgrade a series of mature equipment

03 全面升级一系列成熟设备

04 低能耗 高产出 低水分

Low energy consumption high yield low water conten

设备特点 Product feature

1 运行成本低 LOW OPERATION COST

螺旋压榨机采用物理挤压脱水原理，脱水过程中无需额外提供热源，相比同类烘干设备耗能极低。

The screw press adopts the principle of physical extrusion dehydration, and no additional heat source is needed in the process of dehydration. Compared with the similar drying equipment, the energy consumption is very low

2 持续工作处理量大 LARGE CAPACITY FOR CONTINUOUS WORK

螺旋绞龙的参数经过力学计算分析，利用特殊工艺来增大轴向推力，彻底解决打滑、架桥、返料、报轴等原因导致无法持续工作的问题，单位时间内处理量大大增加。

The screw press adopts the principle After mechanical calculation and analysis of the parameters of the spiral wring dragon, the special process is used to increase the axial thrust, which completely solves the problem of non-continuous work caused by the reasons such as the material return report shaft of the sliding bridge, and the processing capacity per unit time is greatly increased.

3 出渣水分低 LOW SLAG MOISTURE

由于待脱水物料种类繁多，不同物料的含水率、分子水比例、粘度、纤维含量、吸水性、韧性、有机物或无机物等等，数据各有不同，我公司工程师会根据每一位客户提供的待脱水的物料进行分析，计算出适用于该物料的参数，制作出适合的设备，将物理压榨作用利用到极致，降低挤出物料含水率。

Because there are so many types be dehydrated material, the moisture content of different material molecular ratio viscosity in fiber toughness water imbibition water such as organic matter or inorganic matter, such as data is different, our engineer will according to every customer to provide for dehydration of materials were analyzed, and the calculated applies to the parameters of the material, make suitable equipment, physical squeezing effect using the acme, decreasing the moisture content of materials.

4 耐磨耐腐蚀 WEAR AND CORROSION RESISTANCE

螺旋压榨机关键部位喷涂耐磨层，螺旋绞龙叶片表面加焊一层合金，增加耐磨性；核心部件采用304不锈钢制作，耐酸耐碱耐腐蚀，从而大大延长设备使用寿命。

Due to the various materials to be dehydrated, the key parts of the screw press are sprayed with wear resistant layer, and the surface of the spiral wring dragon blade is welded with a layer of alloy to increase the wear resistance. The core parts are made of 304 stainless steel, which is resistant to acid, alkali and corrosion, thus greatly extending the service life of the equipment.

名称		双螺旋连续式压榨机													
型	号	处理量 (t/h)	输送螺旋			压榨螺旋			油缸规格 (mm)	油压压力 (Mpa)	筛网内径 (mm)	筛缝间隙 (mm)	电机功率 (kw)	外形尺寸 (mm)	设备重量 (kg)
			直径(mm)	螺距(mm)	转速(r/min)	直径(mm)	螺距(mm)	转速(r/min)							
	YMYZJ-0.5	0.2-0.5	200	120	8-15	200	100	8-15	手动调节		210	0.5-1.5	3	1800*600*700	450
	YMYZJ-1.5	0.6-1.5	280	150	8-15	280	120	8-15	手动调节		290	0.5-1.5	5.5	2200*750*1100	850
	YMYZJ-3	1.5-3	380	200	8-15	380	150	8-15	手动调节		390	0.5-1.5	7.5	3100*900*1200	1200
	YMYZJ-5	3-5	450	220	8-15	450	180	8-15	50*200	1-6	460	0.5-1.5	11	3600*1050*1500	2200
	YMYZJ-10	7-10	520	260	8-15	520	220	8-15	60*300	1-6	530	0.5-1.5	18.5	4200*1100*1700	3250
	YMYZJ-15	8-15	650	280	8-15	650	240	8-15	70*400	1-6	660	0.5-1.5	22	4700*1200*1800	4300
	YMYZJ-20	12-20	780	320	8-15	780	280	8-15	80*500	1-6	790	0.5-1.5	30	5100*1350*1800	5150
	YMYZJ-30	20-30	800	350	8-15	800	320	8-15	100*800	1-6	810	0.5-1.5	37	6200*1500*2400	6100

备注： 1. 以上数据为标准设计，仅供参考，实际选型需依照项目现场工况优化确定；
2. 该榨汁脱水机非过滤机，仅仅可以实现固液分离，榨汁脱水机的液体还含有一定量的固形物，为了提高挤压分离后的液体的澄清度，可以选择除杂在线过滤器来进步澄清性处理
3. 停机后应及时清理筛网(建议用高压水枪冲洗)，特别是榨汁脱水机尾端出口的物料必须清理，以免造成物料干结堵塞滤网，也可以拆开两半网彻底清洗

NAME		CONTINUOUS DOUBLE SCREW-TYPE PRESS													
M	O	Processing (t/h)	Conveying screw			Squeeze the spiral			Oil cylinder specification (mm)	Hydraulic pressure (Mpa)	Sieve diameter (mm)	Screen gap (mm)	The motor power (kw)	Overall dimensions (mm)	Equipment weight (kg)
			Diameter (mm)	Pitch (mm)	Speed (r/min)	Diameter (mm)	Pitch (mm)	Speed (r/min)							
	YMYZJ-0.5	0.2-0.5	200	120	8-15	200	100	8-15	Manual regulation		210	0.5-1.5	3	1800*600*700	450
	YMYZJ-1.5	0.6-1.5	280	150	8-15	280	120	8-15	Manual regulation		290	0.5-1.5	5.5	2200*750*1100	850
	YMYZJ-3	1.5-3	380	200	8-15	380	150	8-15	Manual regulation		390	0.5-1.5	7.5	3100*900*1200	1200
	YMYZJ-5	3-5	450	220	8-15	450	180	8-15	50*200	1-6	460	0.5-1.5	11	3600*1050*1500	2200
	YMYZJ-10	7-10	520	260	8-15	520	220	8-15	60*300	1-6	530	0.5-1.5	18.5	4200*1100*1700	3250
	YMYZJ-15	8-15	650	280	8-15	650	240	8-15	70*400	1-6	660	0.5-1.5	22	4700*1200*1800	4300
	YMYZJ-20	12-20	780	320	8-15	780	280	8-15	80*500	1-6	790	0.5-1.5	30	5100*1350*1800	5150
	YMYZJ-30	20-30	800	350	8-15	800	320	8-15	100*800	1-6	810	0.5-1.5	37	6200*1500*2400	6100

Remark: 1. The above data are designed as a standard and only for reference. The actual model selection shall be determined according to the optimization of the project site conditions;
2. The juice dehydrator is not a filter, which can only realize the solid-liquid separation. The liquid of the juice dehydrator also contains a certain amount of solids. You can choose to remove the impurity on-line filter to improve the clarification process
3. Clean the screen immediately after the machine is shut down (it is recommended to use high-pressure water gun for cleaning), and clean the material at the exit of the end of the juicer dehydrator, so as to avoid the dry knot of the material blocking the filter screen. You can also disassemble the two halves of the net for thorough cleaning.

配套YMPS双轴破碎机

SUPPORTING YMPS DOUBLE SHAFT SHREDDER

双轴破碎机又名剪切式撕碎机通过剪切、撕裂和挤压减小物料尺寸，这种破碎机广泛应用于废塑料、废橡胶、木材、农作物秸秆和其它大体积废弃物，双轴破碎机系列为我国的废物回收利用前期的破碎、减容处理提供的设备，具有高扭矩，节能、低噪音、低粉尘，维护费用低、经济耐用等特点。

Biaxial shredding machine and shearing shredding machine via cut apart and extrusion to decrease the size of the material, the shredding machine is widely used in plastic waste rubber wood crop straw and other large volume of waste, biaxial shredding machine series, for our country's recycling early broken, and the reduction treatment provided by the equipment, high torque, energy saving low voice low dust, low maintenance cost economic and durable, etc.



性能稳定，经久耐用
Stable performance and durability

破碎效果好、工作效率高
Good crushing effect and high working efficiency

高效剪切角度，可有效处理废料
High efficiency shearing Angle, can effectively treat the waste

设备特点 Product feature

1、本机设计合理，采用加厚优质钢材制造，经久耐用。

The machine is designed rationally, made of thickened high-quality steel, and durable.

2、架构简单合理，操作保养简单。

Simple and reasonable structure, simple operation and maintenance.

3、碎料采用分离设计，使之产量更高。

The separation design is adopted to make the crushing material yield higher.

4、加工破碎出的片料均匀，损耗小，不同型号满足不同需要。

Processing of the broken out sheet material uniform, small loss different models to meet different needs.

5、同时配备不同材质的刀具，以便针对不同的物料，刀具经久耐用寿命长。

At the same time equipped with different materials of the cutting tools, so that for different materials, the long service life of the cutting tools.

6、本机具有结构先进，外型美观，操作简易，运转稳定，投资省、高效率等优点。

The machine has the advantages of advanced structure, beautiful appearance, easy operation, stable operation, low investment and high efficiency.

7、配备加大号皮带轮增加粉碎机惯性，可以节约电能以及强有力的破碎。

Equipped with plush-size pulley to increase the crusher inertia, energy saving power and strong crushing.



名称		双轴撕碎机									
型	号	处理量 (t/h)	刀片直径 (mm)	刀片厚度 (mm)	刀片数量 (件)	转速 (r/min)	电机功率 (Kw)	设备重量 (kg)	设备外形尺寸		
									长度L(mm)	宽度W(mm)	高度H(mm)
	YMPS-0.5	0.2-1	160	14-25	19-11	25-8	4	320	300	300	170
	YMPS-1.5	0.6-2	160	14-25	25-14	25-8	4	400	380	300	170
	YMPS-3	1.5-4	190	14-30	30-14	25-8	5.5	750	450	360	200
	YMPS-5	3-6	260	20-40	35-17	25-8	11	1150	720	470	300
	YMPS-10	7-12	260	20-40	40-20	25-8	18.5	1350	820	470	300
	YMPS-15	8-18	300	28-50	40-20	25-8	22	1800	1200	540	350
	YMPS-20	12-22	300	28-50	50-30	25-8	30	2400	1400	540	350

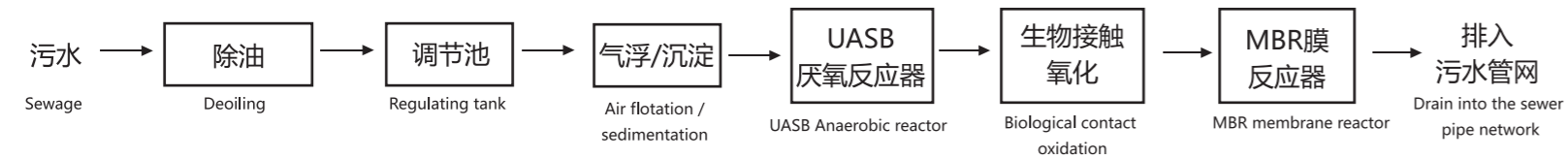
- 备注：**
1. 以上数据为标准设计，仅供参考，实际选型需依照项目现场工况优化确定；
 2. 执行期间的定期检查。如果异常噪音或轴承温度超过70°C，立即停止检查，排除故障，然后开始运行。
 3. 只有在机器正常运转后才能进料。进料必须均匀，以防止硬铁混入，机器关闭前必须停止进料；机器停止工作后，停止进料，切断电源。
 4. 排料口检查或调整后，可以手动转动转子等部件，避免摩擦和晃动，从而在电机启动前灵活转动。
 5. 务必检查外壳密封条是否干净整洁，轴承润滑脂1-6个月需要更换一次，根据物料性质决定更换周期。

NAME		DOUBLE SHAFT SHREDDER										
M	O	Processing (t/h)	The blade diameter (mm)	The thickness of the blade (mm)	The blade number (a)	Speed (r/min)	The motor power (kw)	Overall dimensions (mm)	Equipment weight			
									Length(mm)	Width(mm)	Height(mm)	
	MODEL	YMPS-0.5	0.2-1	160	14-25	19-11	25-8	4	320	300	300	170
		YMPS-1.5	0.6-2	160	14-25	25-14	25-8	4	400	380	300	170
		YMPS-3	1.5-4	190	14-30	30-14	25-8	5.5	750	450	360	200
		YMPS-5	3-6	260	20-40	35-17	25-8	11	1150	720	470	300
		YMPS-10	7-12	260	20-40	40-20	25-8	18.5	1350	820	470	300
		YMPS-15	8-18	300	28-50	40-20	25-8	22	1800	1200	540	350
		YMPS-20	12-22	300	28-50	50-30	25-8	30	2400	1400	540	350

- Remark:**
1. The above data is the standard design for reference only, and the actual selection shall be determined according to the project site working condition optimization;
 2. Regular inspection during execution. If the abnormal noise or bearing temperature exceeds 70 °C, stop the inspection immediately, remove the fault, and then start the operation.
 3. The feeding can only be conducted after the machine is in normal operation. The feeding must be even to prevent hard iron from mixing. The feeding must be stopped before the machine is shut down. After the machine stops working, the feeding shall be stopped and the power supply shall be cut off.
 4. After the discharge port is checked or adjusted, the rotor and other parts can be turned manually to avoid friction and shaking, so as to rotate flexibly before the motor starts.
 5. Be sure to check whether the sealing strip of the shell is clean and tidy. The bearing grease needs to be replaced once every 1-6 months. The replacement cycle is determined according to the nature of the material.

艺迈YMWD餐厨垃圾处理设备配套污水处理系统由上海艺迈实业有限公司研发而成，主要针对于现有餐厨垃圾、有机垃圾处理后产生的废水特性设计，占地面积小，采用荷兰进口菌种，COD去除率可达90%以上，处理效率及效果远超过其他处理方式。

Yimai YMWD Household food waste treatment equipment supporting sewage treatment system is developed by Shanghai Yimai Industrial Co., LTD., which is mainly aimed at the design of the characteristics of wastewater generated by the existing Household food waste and organic waste treatment. It covers a small area and adopts imported strains from Holland. The COD removal rate can reach over 90%, and the treatment efficiency more than other treatment methods.

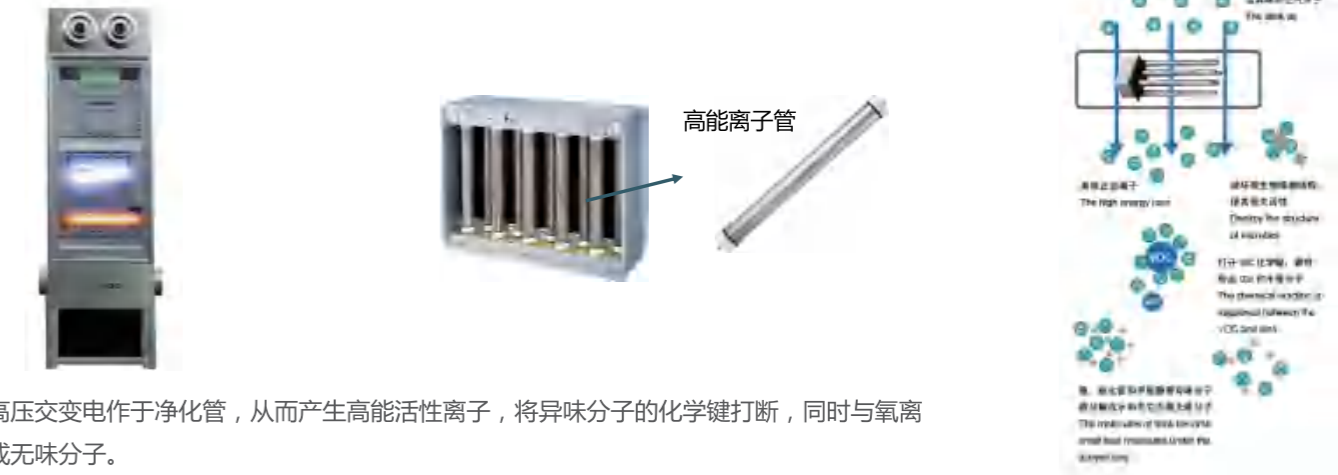


- ◆ 如需配套污水处理系统，现场需要一定占地面积，且投资及运维成本需增加。
- ◆ 处理工艺因现场条件、水质及处理需求不同，可定制。
- ◆ If the supporting sewage treatment system is needed, the site needs a certain area, and the investment, operation and maintenance costs will increase;
- ◆ The treatment process can be customized according to the site conditions, water quality and treatment requirements.



根据餐厨垃圾及农贸市场等有机湿垃圾处理产生的异味气体特性，我公司配套的高效除臭系统通过采用“高能离子除臭+活性氧离子水除臭”为主，同时根据现场工况及用户需求配合静电除味技术、等离子催化除臭、UV光解除臭以及水除臭（含生物除臭技术）等多种措施，模块化设计，确保设备间无组织气体排放达到《恶臭污染物排放标准》（GB14554-93）。

According to eat hutch garbage and farmers' markets such as organic wet garbage disposal of odor gas features, our company form a complete set of effective deodorization system by using high-energy ion deodorization + active oxygen ionized water deodorant mainly according to site conditions and user needs at the same time cooperate with electrostatic plasma catalysis deodorant UV light lifting technique to remove taste smelly and water deodorization (including biological deodorization technology) a variety of measures, such as unorganized emissions between modular design, to ensure that equipment to odorous pollutants emission standards (GB14554-93)



- ▶ 高能离子除臭技术是高压交变电作用于净化管，从而产生高能活性离子，将异味分子的化学键打断，同时与氧离子发生化学反应，变成无味分子。
- ▶ 在此过程中，也能够破坏微生物，如病毒、霉菌、细菌等的细胞结构，并使其丧失活性，起着高效杀菌的作用。
- ▶ 高能离子除臭技术是世界公认的最好的无耗材异味去除技术之一。
- ▶ High energy ion deodorization technology is made of high pressure alternating current in the purification tube, so as to produce high energy active ions, break the chemical bonds of odor molecules, and at the same time, react with oxygen ions to become odorless molecules.
- ▶ In this process, it can also destroy the cell structure of microorganisms, such as viruses, molds and bacteria, and inactivate them, playing the role of efficient sterilization.
- ▶ High energy ion deodorization technology is recognized as one of the best no-consumable odor removal technologies in the world.

配套户外型智能一体化移动式设备房

SUPPORTING SMART MOBILE DEVICE ROOM



产品特点

PRODUCT ADVANTAGES

我司创新性引入集装箱循环利用的新兴产业，主打绿色环保的概念，充分利用集装箱，将一个钢铁盒子装修成为充满环保气息的厨余垃圾就地资源化处理标准板房。同时兼具实用性和观赏性，对环境非常友好；设备用房外观颜色、风格可以根据项目原色调、风格选择，与环境融合。

Our company innovatively introduces the emerging industry of container recycling, and focuses on the concept of green environmental protection. By making full use of the container, we decorate a steel box into a standard board house full of environmental protection for the on-site recycling treatment of kitchen waste, which is both practical and ornamental. It is very friendly to the environment. The appearance color style of the equipment room can be selected according to the original color style of the project and integrated with the environment.

设备用房全部标准化设计，相关辅助设备设施（工具、备品、消防、保洁等用品）完善，最大限度满足用户的设备管理需求。

All equipment rooms are standardized in design, and related auxiliary equipment and facilities (tools, fire fighting, cleaning and other supplies) are improved, so as to meet the equipment management needs of users to the greatest extent.

运输安装一体化，非常方便，无需另行修建构筑物设备房，工期短、投资少，并可按照后期需要随时随地调整位置，灵活方便。

Transportation and installation integration, very convenient, no need to build another structure equipment room, short period of time and less investment, and according to the late need to adjust the location, flexible and convenient.

解决了众多新建及改造设备房受限的棘手问题。

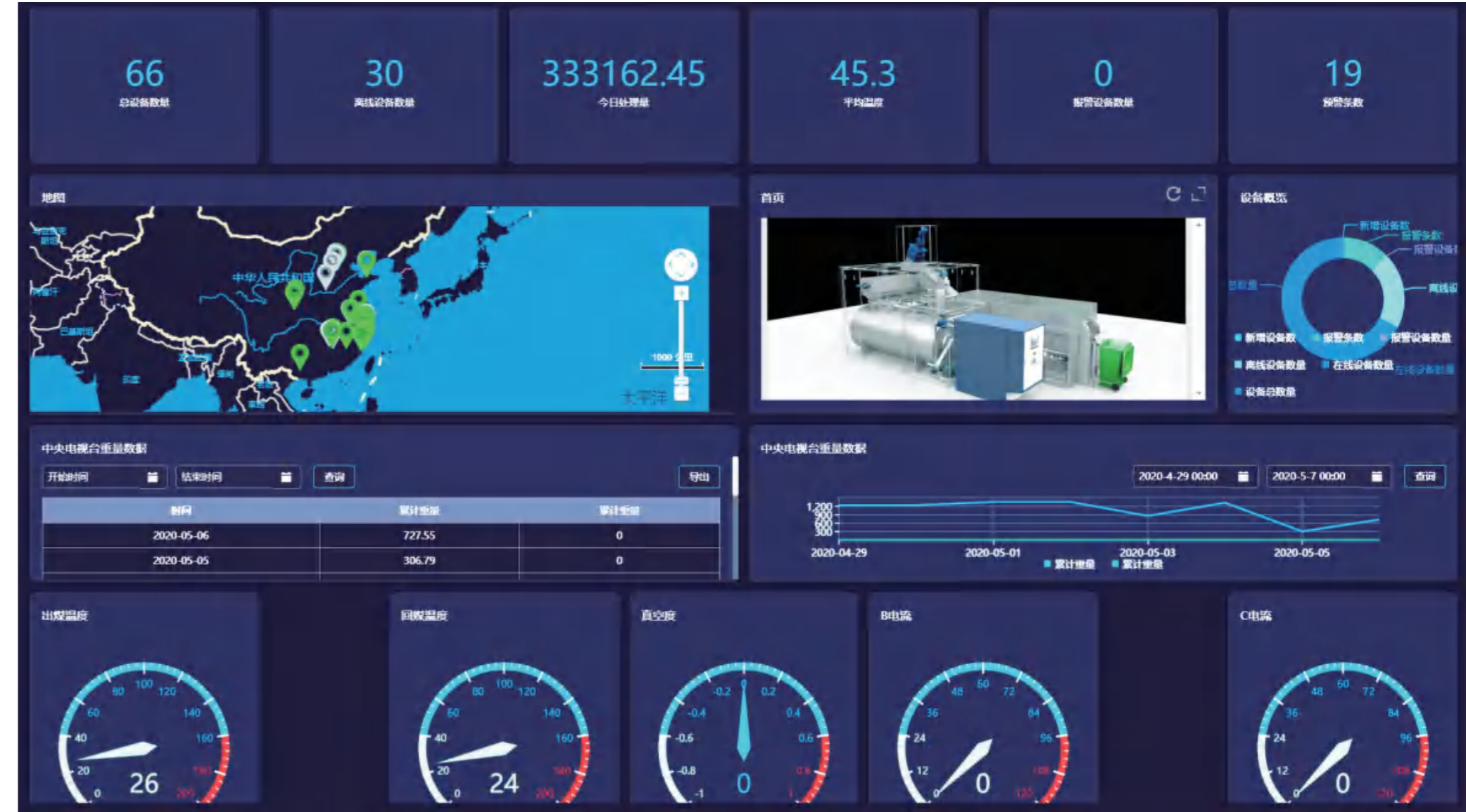
Solved many new and retrofit equipment room restricted difficult problems.



智慧环保工业4.0+1

SMART ENVIRONMENTAL PROTECTION INDUSTRY 4.0+1

以物联网、云计算、人工智能，安防等领域资深的技术为依托，推出了智慧环保工业4.0+1的运维模式。
Based on the Internet of things cloud computing artificial intelligence, security and other advanced technologies, launched the smart environmental protection industry 4.0+1 operation and maintenance model





多元售后-辐射全国

MULTIVARIATE AFTER - SALES - RADIATION ACROSS THE COUNTRY

■ 经多年工程项目的积累与打磨，我公司现已形成专业化、标准化、富有各类型项目经验的专属售后服务团队，立足上海、辐射全国。

After years of accumulation and polishing of engineering projects, our company has now formed a professional, standardized and exclusive after-sales service team with experience in various types of projects, based in Shanghai and covering the whole country

■ 结合智能远程监控系统，可做到实时响应、全天在线，采用远程服务与当地专业售后工程师（机械故障排除、零部件现场更换等）有机结合的方式，大大缩短了响应、故障诊断、服务任务派发等的反应时间。

Combined with the intelligent remote monitoring system, real-time response can be achieved throughout the day online, using the remote service and the local professional after-sales engineer (mechanical troubleshooting parts on-site replacement, etc.) organic combination of the way, greatly reduce the response time of fault diagnosis service task dispatch

■ 通过当地售后服务团队+400服务电话+设备一键远程协助+智能远程监控平台“四位一体”快速主动式售后服务机制，24h内解决问题，真正给以用户“一键式”“一站式”的便捷服务！

Through the local after-sales service team +400 service phones + one-button remote assistance of equipment + intelligent remote monitoring platform, the rapid and active after-sales service machine is made, which can solve problems within 24h and truly provide users with one-button one-stop convenient service

1.发现故障



2.派工检测



3.现场维修



4.建档备案



全国服务电话：400-821-3003

部分荣誉资质

HONOR CERTIFICATION



检验报告

INSPECTION REPORTS



用户使用评价

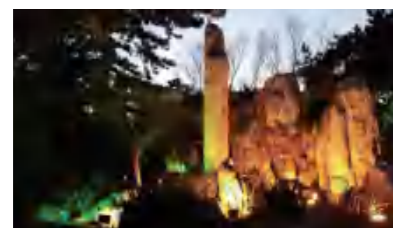


工程应用实例

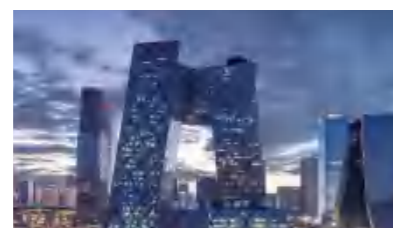
ENGINEERING APPLICATION
EXAMPLES

机关、企事业单位示范点

DEMONSTRATION PILOT PROJECT OF ORGANS, ENTERPRISES AND INSTITUTIONS



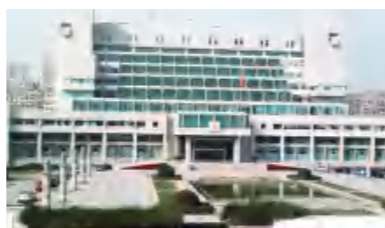
钓鱼台国宾馆17号楼芳菲苑
No. 17 FangFeiYuan, Diaoyutai State
Guesthouse



中央广播电视总台
China Central Television



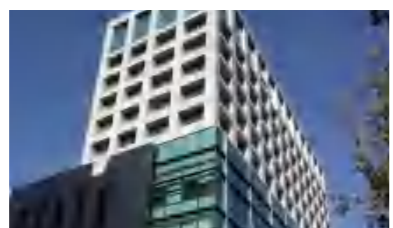
上海市政府某食堂
Shanghai government canteen



上海市金山区人民政府
Shanghai Jinshan District
People's Government



江西省行政中心
Administrative Center of
Jiangxi Province



南京市城市管理局
Nanjing City Administration



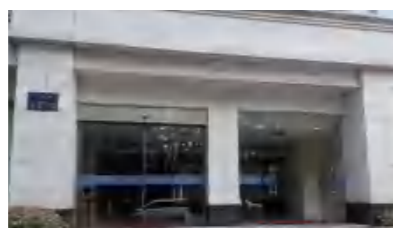
西安市人民政府
Xi 'an District People's
Government



南京市交通运输局
Nanjing Transportation Bureau



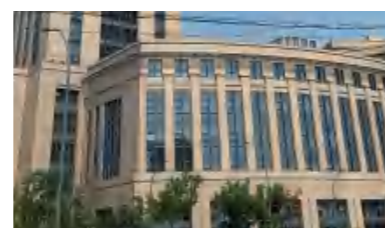
上饶市行政中心
Shangrao Administrative Center



浙江省机关事务管理局
Zhejiang Provincial Bureau Of
Government Affairs



大连市人民政府
Dalian People's Government



余姚市行政服务中心
Yuyao Administrative Service Center



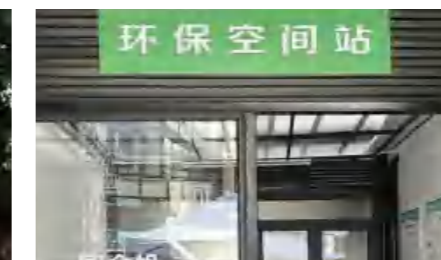
江西吉安机关事务管理局
Ji 'an Government Offices Administration
of Jiangxi Province



上海市奉贤区机关事务管理局
Shanghai Fengxian District Government
Offices Administration



国家税务总局嵊州税务局
Shengzhou Tax Bureau of the State
Administration of Taxation



上海静安区同乐坊创意园区
Tonglefang Creative Park,
Jing 'an District, Shanghai



台州黄岩区人民政府
Taizhou Huangyan District
People's Government



桐乡市机关事务管理局
Tongxiang Municipal Government
Offices Administration

小区、村镇

VILLAGES AND TOWNS



上海金山区星火村
Xinghuo Village, Jinshan District, Shanghai



盐城市盐都区大冈镇佳富村
Jiafu Village, Dagang Town, Yandu
District, Yancheng



上海远中风华园
Shanghai Yuanzhong Fenghua Garden



盐城高新区伍佑垃圾处理站
Wuyou Garbage Disposal Station in
Yancheng High-tech Zone

学校项目

SCHOOL PROJECT



清华大学
Tsinghua University



台州第一职业技术学院
Taizhou First Vocational and Technical College



南京晓庄幼儿园项目
Nanjing Xiaozhuang Kindergarten Project



黄冈职业技术学院
Huanggang Vocational and Technical College



合肥加拿大国际学校
Canadian International School hefei



福建水利电力职业学院
Fujian College of water Conservancy and Electric Power



广西贵港实验第二学校
Guangxi Guigang Experimental Second School



黄岩城关中学
Huangyan Chengguan Middle School

农贸市场项目

FARMERS MARKET PROJECT



盐南高新区农贸市场
Farmers' Market of Yannan High-tech Zone



上海新安农贸市场
Shanghai Xin'an Farmers' Market



郑东新区五洲农贸市场
Wuzhou Farmers' Market, Zhengdong New District



苏州新天地商业广场
Suzhou Xintiandi Commercial Plaza

中型垃圾集中处理中心示范点

DEMONSTRATION SITE OF MEDIUM GARBAGE CENTRALIZED TREATMENT CENTER



南京清凉山垃圾中转站
Nanjing Qingliangshan Garbage Transfer Station
Capacity/处理量：50t/日(d)



南京江宁开发区垃圾中转站
Nanjing Jiangning Development Zone Garbage transfer Station
Capacity/处理量：15t/日(d)



台州黄岩区易腐垃圾处理中心
Taizhou Huangyan District Perishable garbage treatment Center
Capacity/处理量：12t/日(d)



铜川市餐厨垃圾集中处理中心
Tongchuan Kitchen waste Centralized treatment Center
Capacity/处理量：5t/日(d)



苏州市新庄垃圾中转站
Suzhou Xinzhuang Garbage transfer Station
Capacity/处理量：5t/日(d)



金山卫市场
Jinshanwei Market
Capacity/处理量：6t/日(d)



媒体报道与社会效应

MEDIA REPORTS&SOCIAL EFFECT



央视新闻记者对我公司及餐厨垃圾就地减量资源化处理项目进行实地采访报道。
CCTV news reporter interviewed and reported our company and tonglefang kitchen waste disposal project in jing'an district of Shanghai.



上海东方卫视、上海新闻综合频道在晚间同步报道，融媒体中心记者何婕作为垃圾分类宣传志愿者走进办公区，倡导垃圾分类和餐厨垃圾就地减量资源化处理。
Shanghai Dragon TV's Shanghai News Channel reported simultaneously in the evening that Rong Media Center reporter He Jie went to the office area as a volunteer to promote garbage classification and advocate waste sorting and recycling treatment by reducing the amount of food and kitchen waste

YIMAN 艺迈® | 专注提高 专业服务

人民日报社—中国城市报就我司餐厨垃圾处理业务进行了整版专题报道，多家电视及网络媒体也陆续对我司各地的餐厨垃圾处理示范点进行了报道。

The People's Daily, in charge of China city news, made a full-page special report on our kitchen waste treatment business, and a number of TV and Internet media also successively reported on our kitchen waste treatment demonstration sites.



各地报道

MEDIA REPORTS&SOCIAL EFFECT

上海新闻综合频道 SHANGHAI NEWS CHANNEL



上饶新闻报道 SHANGRAO NEWS CHANNEL



江西卫视综合频道 JANGXI NEWS CHANNEL



西安新闻报道 XI' AN NEWS CHANNEL



黄岩新闻报道 HUANGYAN NEWS CHANNEL



艺迈愿景Yimai Vision

生态兴城 开启城乡资源绿色循环新模式

Ecological Revitalization Let's open a new pattern of green recycling of urban and rural resources

环境保护是人类共同的使命和责任。艺迈致力于开启一种城乡协同发展的资源绿色循环新模式。

以前，乡村为城市输送食物，城市却向乡村输送堆积成山的垃圾；但是现在，垃圾得以真正地变废为宝，成为回馈土地厚赠的宝贵资源，艺迈成为有机肥料之仓、变废为宝之所，有机废弃物可以实现同城消化。城市的垃圾减少了、农村的土地肥沃了，城市可以为乡村输送生态有机肥料，乡村为城市提供绿色健康食品，打破以往的恶性循环，建立起可持续发展的绿色发展、生态兴城模式。

Environmental protection is the common mission and responsibility of mankind. Yimai is committed to opening a new mode of resource green cycle of coordinated urban and rural development.

In the past, cities sent mountains of garbage to the countryside while villages sent food to them. But now, garbage can truly turn waste into treasure, and become a precious resource to give back to the land. The urban waste is reduced and the rural land is fertile. The city can deliver ecological organic fertilizer to the countryside, and the countryside can provide green and healthy food to the city. The vicious circle of the past is broken, and a sustainable model of green development and ecological revitalization will be established.



艺迈助力 绿色生活

专注提高 专业服务

YIMAN 艺迈®

专注提高 专业服务

THE EXPERT OF HOUSEHOLD FOOD WASTE SOLUTION

有机垃圾处理方案
解决专家

同济大学联合研发



YIMAN 艺迈®

上海艺迈实业有限公司

Shanghai Yimai Industrial Co.,Ltd

地址：上海市金山工业区金百路466号

Add: No.466, Jinbai Road, Jinshan Industrial Zone, Shanghai

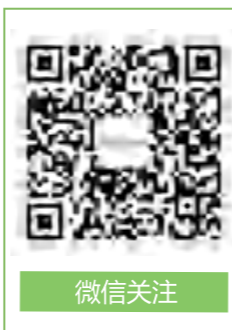
服务电话/Tel: 400-821-3003

邮编/Pc: 201506

网址/URL: <http://www.ym-sh.com>

企业邮箱/E-mail: ym@ym-sh.com

本公司保留对产品更改权利，个别参数如有变动，恕不另行通知。敬请谅解。
With the development of products, we reserve the right to alter the data. Please understand.



微信关注

版本号：202006020