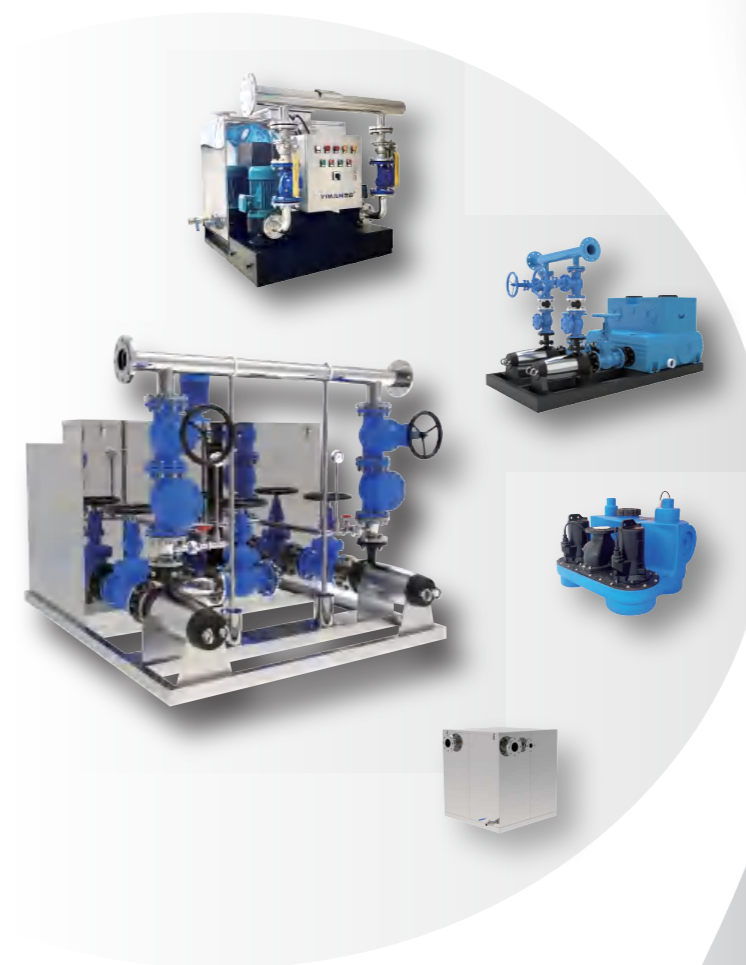


专注提高
专业服务

FOCUS ON IMPROVING PROFESSIONAL SERVICES

CENTRALIZED SEWAGE CONVEYING EQUIPMENT

污水提升器 系列（泵站）



YIMAN 艺迈®

上海艺迈实业有限公司

Shanghai Yimai Industrial Co., Ltd

地址：上海市金山工业区金百路466号

Add: No.466, Jinbai Road, Jinshan Industrial Zone, Shanghai

服务热线/Tel: 400-821-3003

邮编/Pc: 201506

网址/URL: <http://www.ym-sh.com>

企业邮箱/E-mail: ym@ym-sh.com

本公司保留对产品设计更改权利，个别参数如有变动，恕不另行通知。敬请谅解。
With the development of products, we reserve the right to alter the data. Please understand.



微信关注

版本号：202207020

企业简介

上海艺迈实业有限公司是一家集研发、生产、销售和服务为一体的高新技术企业。公司产品：水资源专用机械设备制造、智慧水务集成系列产品、成套供水集成系列产品、排污系列产品、餐厨（有机）垃圾处理系列产品、直饮水、集成水厂、电机和水泵等。生产基地坐落于上海金山工业经济开发区。

公司拥有精良的生产加工设备，并与同济大学环境科学与工程学院强强联合，建立“同济环境-艺迈联合实验室”，开展技术转让、成果转化、技术攻关等一系列技术研讨并深入合作。同期，学院还与我司合作建立“同济大学-上海艺迈实践教育基地”，并授予我司“同济大学‘卓越计划’校企联盟单位”称号。

艺迈主编三项餐厨废弃物就地处理设备团体标准且参编了多项国家标准、团体标准及技术手册。2020年荣获了“金山区小巨人”企业荣誉，获批成为“金山区企业技术中心”，成为金山区打响“上海制造”品牌的重要承载示范。2022年荣获国家级“专精特新”小巨人企业荣誉称号。

艺迈致力于为用户提供智慧水务系统解决方案，包含方案设计、设备制造以及专业的技术咨询与维护服务；公司在全国各省市均设有分支机构，并在业界赢得了良好的声誉。

艺迈秉承“专注提高，专业服务”的经营理念，贯彻务实工作作风和诚信负责的价值观念，为您提供高品质的产品和优质的解决方案，实现发展与共赢。



COMPANY PROFILE

Shanghai Yimai Industrial Co., Ltd. is a high-tech enterprise integrating R&D, production, sales and service. Main products of the company: manufacturing of special machinery and equipment for water resources, intelligent water affairs integration series products, complete water supply integration series products, sewage discharge series products, kitchen (organic) waste treatment series products, direct drinking water, integrated water plants, motors and pumps, etc. The production base is located in Shanghai Jinshan Industrial Economic Development Zone.

The company has excellent production and processing equipment, and has established a "Tongji Environment Yimai Joint Laboratory" in conjunction with the School of Environmental Science and Engineering of Tongji University to carry out a series of technical discussions and in-depth cooperation on technology transfer, achievement transformation, technology breakthrough, etc. At the same time, the college also cooperated with our company to establish "Tongji University - Shanghai Yimai Practical Education Base", and awarded our company the title of "Tongji University 'Excellence Program' University Enterprise Alliance Unit".

Yimai edited three group standards for on-site kitchen waste treatment equipment and participated in the compilation of a number of national standards, group standards and technical manuals. In 2020, it won the honor of "Small Giant in Jinshan District", was approved as the "Jinshan District Enterprise Technology Center", and became an important bearing demonstration for Jinshan District to launch the "Made in Shanghai" brand. In 2022, it won the honorary title of national "specialized, special and new" small giant enterprise.

Yimai is committed to providing users with intelligent water system solutions, including scheme design, equipment manufacturing and professional technical consulting and maintenance services; The company has branches in all provinces and cities across the country, and has won a good reputation in the industry.

Yimai adheres to the business philosophy of "focus on improvement and professional service", implements the pragmatic work style and the values of integrity and responsibility, and provides you with high-quality products and high-quality solutions to achieve development and win-win results.



CONTENTS

目录

艺迈污水提升器 Yimai sewage elevator	01
设备型号定义 Equipment model definition	03
强粉碎无堵塞自清洁污水提升器 Strong crushing non blocking self-cleaning sewage lifter	05
内置式不锈钢污水提升器 Built in stainless steel sewage elevator	09
外置式不锈钢污水提升器 External stainless steel sewage lifter	12
内置式聚乙烯 (PE) 污水提升器 Built in polyethylene (PE) sewage lifter	14
外置式聚乙烯 (PE) 污水提升器 External polyethylene (PE) sewage lifter	15
性能参数 Performance parameter	17
智慧污提 Wisdom pollution	19
常见故障分析与维修 Common fault analysis and maintenance	21
部分项目案例 Some project cases	23
艺迈服务 Yimai service	25

艺迈污提系列与传统排污方式对比

	传统排污方式	智能污水提升器方式
排污方式	在卫生间的同层或下一层修建污水泵房，在污水泵房内设污水集水池，收集污水，再经过污水泵排出。根据《建筑给水排水设计规范》规定，污水池有效容积不宜小于最大一台污水泵5分钟出水量，污水泵每小时不超过6次启动，污水池一般比较大。	不需要修建污水集水池，污水直接进入集水箱内，再通过污水泵排出，只需保证给水箱的进出口低于排水管即可。参照EN-12056-2，集水箱的有效容积仅为同条件污水池的1/60左右，集水箱的作用不再是蓄水，而是“过流”。
运营维护	水池需定期清掏，污水泵长期浸于污水池内，不仅受到污水腐蚀，而且维护条件差，影响环境卫生。	集水箱基本不需要清掏，水泵干式，易于清洁维护和保养，或者内置式水泵安装，污水及时排走，避免长时间浸泡。
卫生条件	污水池无法密闭，污水在污水池内停留时间长，异味外溢和蚊蝇细菌滋生，影响环境卫生及舒适度。	设备密闭，仅通过通气口与室外相通，泵房环境卫生，基本无异味。
反冲洗功能	无。	两台泵互相反冲洗，防止水泵意外堵塞，降低设备维护成本。
占地面积，土建投资，安装调试	为了符合《建筑给水排水设计规范》，污水池和污水泵房占地面积很大，建设工期长，土建投资大。	无需设置土建污水池，土建投资少，占地小，设备结构紧凑，安装快捷简便。

艺迈污水提升器

我司专业从事各种规格的污水提升器的研发、生产与销售。整套污水提升器中，控制系统元器件全部采用国内外知名品牌，性能优越。

水泵过流能力强，且控制系统采用独特的多重液位控制模式，设备在低液位停泵，高液位1台水泵启动，超高液位时2台水泵同时启动，而且水泵自动轮换运行，提高了设备使用寿命，运行更加安全可靠；轻松实现智能化家居、智慧小区的需要。

COMPARISON BETWEEN YIMAI SEWAGE LIFTING SERIES AND TRADITIONAL SEWAGE DISCHARGE METHODS

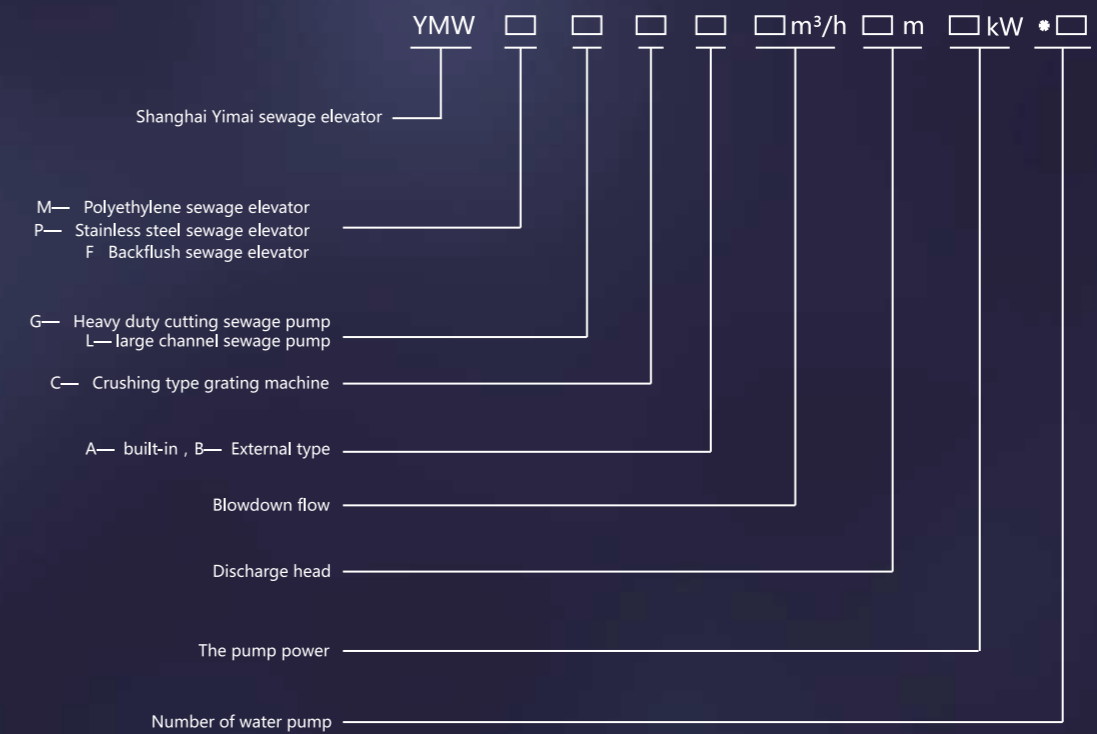
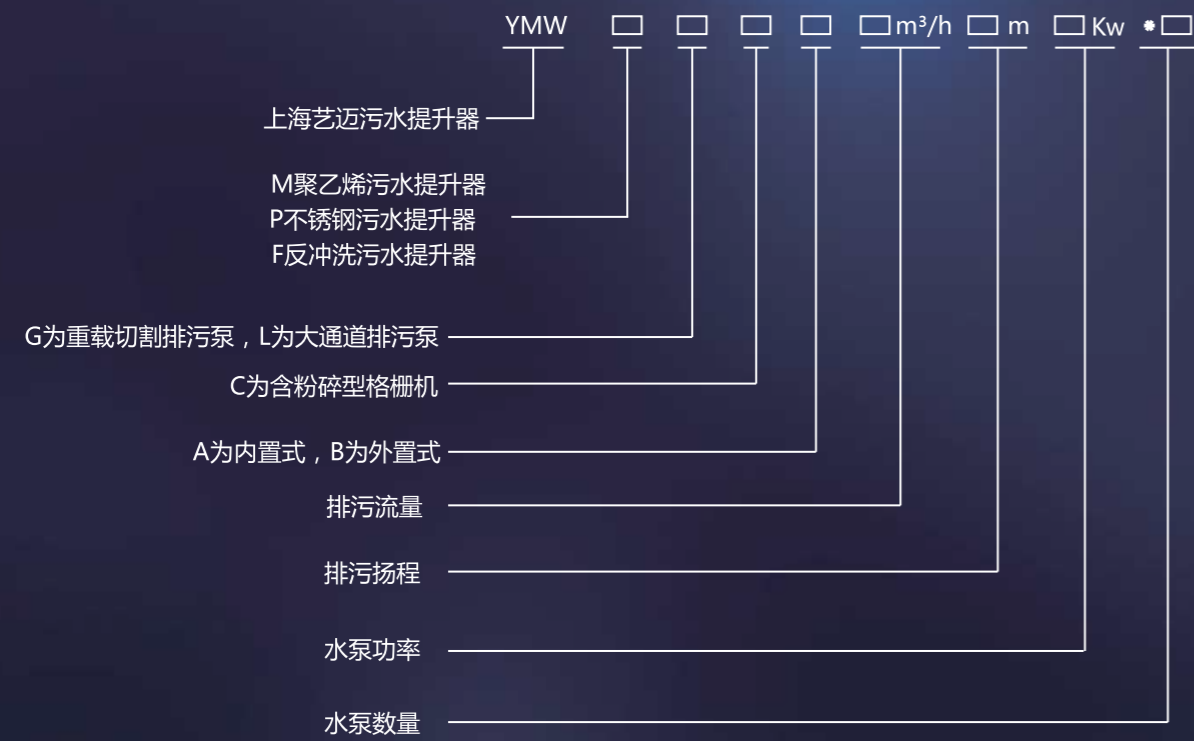
	Traditional sewage discharge	Intelligent sewage elevator mode
Sewage discharge mode	Built in the tree or the next layer of toilet sewage pump room, in the wastewater with sewage pump room set pool, sewage collection, repass sewage pump discharge According to the rules and regulations of building water supply and drainage design, sewage pool is effective Volume should not be less than the maximum 5 minutes a sewage pump water yield, sewage pump is less than 6 times per hour starts, sewage pool is compared commonly big.	There is no need to build sewage collection tank, sewage directly into the collection tank Discharge through the sewage pump, just ensure that the inlet of the water tank is lower than Drain pipes. Refer to EN-12056-2, effective capacity of collection tank The volume is only about 1/60 of the same condition sewage pool, the function of the collection tank is not It is impoundment again, but "overflow".
Operation and maintenance	The pool needs to be cleared regularly, and the sewage pump is immersed in the sewage pool for a long time Corrosion by sewage, and poor maintenance conditions, affecting environmental health.	Collecting water tank basically does not need to clear out, water pump dry type, easy to clean and maintain And maintenance, or built-in pump installation, sewage drainage in time, Avoid prolonged immersion.
Sanitary conditions	Sewage tank can not be closed, sewage in the sewage tank stay for a long time, different Odor spillover and bacterial breeding affect environmental hygiene and comfort.	The equipment is closed, only through the ventilation and outdoor communication, the pump room environment sanitary Raw, basically no peculiar smell.
Backwashing function	None.	The two pumps backwash each other to prevent accidental blockage of the pump and lower the equipment Maintenance costs.
Floor area, civil engineering Investment, installation and commissioning	In order to comply with the "building water supply and drainage design code", sewage tank and sewage Water pump room covers an area of large, long construction period, civil investment.	No need to set up civil sewage tank, civil construction investment less, small footprint, equipment Compact structure, easy installation.

YIMAI SEWAGE LIFTING DEVICE

Our company specializes in the development, production and sales of sewage lifting equipment of various sizes. In the whole sewage lifting device, all the components of the control system are known from abroad Famous brand, superior performance.

The water pump has strong flow capacity, and the control system adopts a unique multiple liquid level control mode. The equipment stops the pump at the low liquid level, one pump starts at the high liquid level, and two pumps at the high liquid level. The pump starts at the same time, and the pump automatically rotates, which improves the service life of the equipment and makes the operation more safe and reliable. Easy to achieve intelligent home, intelligent community needs.

系列产品型号定义/SERIES PRODUCT MODEL DEFINITION



强粉碎型无堵塞自清洁污水提升器

STRONG COMMINATION NON - CLOGGING SELF - CLEANING SEWAGE ELEVATOR



适用范围：地铁站、地下商场、停车场等。
Subway station, underground shopping mall, parking lot, etc

产品特点：双重粉碎，双重保障，实现物料的强力切割，当固体污物堵塞时，控制箱会向粉碎装置发出信号，刀片自动反转，将障碍物推出后重新进行粉碎，双箱体设计，实现24小时不停机。大通道排污泵和切割泵交替运行，通过能力更强，安装维护方便。

Product features: Double crushing and double guarantee to realize strong cutting of materials, When solid dirt is blocked, the control box will send a signal to the crushing device, The blade reverses automatically, and smashes again after pushing out the obstacles. The double box is set, It can realize 24-hour non-stop. The large channel sewage pump and cutting pump operate alternately, It has stronger passing capacity and convenient installation and maintenance.

产品概述

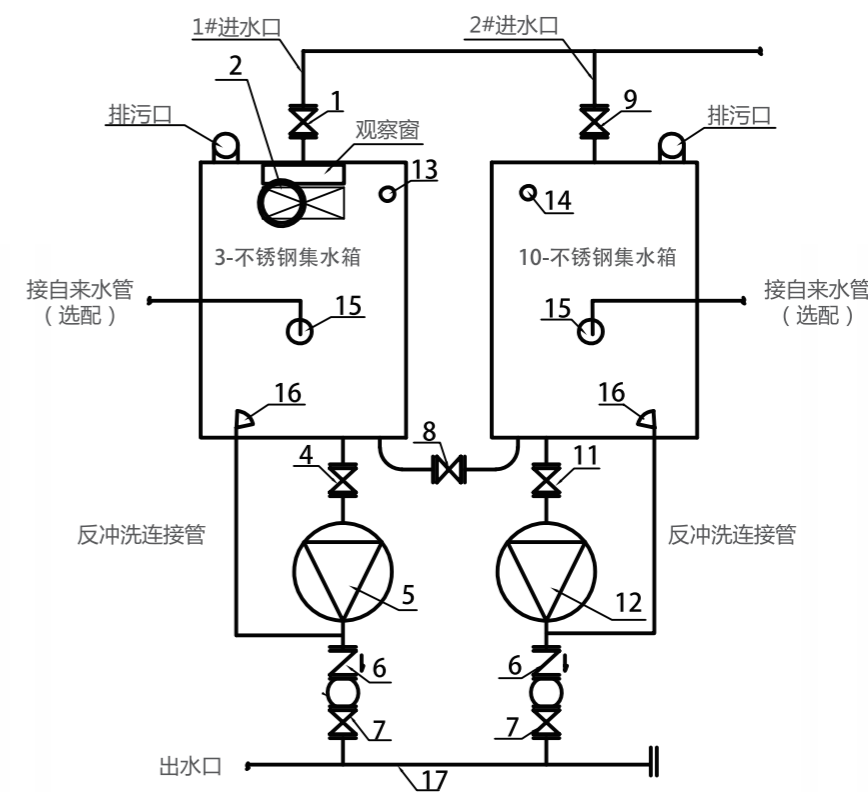
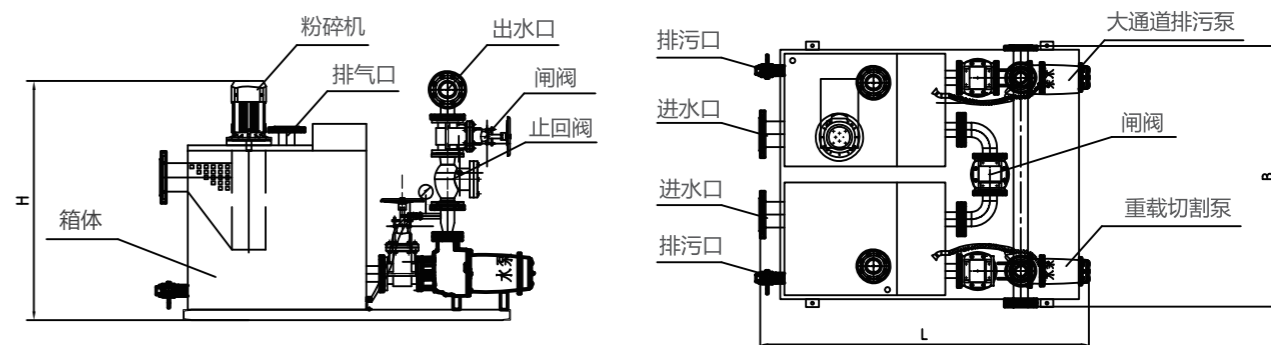
PRODUCT OVERVIEW

我司新研发出一款可不停机维保的强粉碎型无堵塞自清洁污水提升装置，该设备由2个不锈钢集水箱、粉碎机、1台大通道排污泵、1台切割排污泵、集水箱进水闸阀、水泵进水闸阀、水泵出水闸阀、水泵出水止回阀、集水箱连接闸阀、反冲洗装置、自清洁装置、出水管路、液位计、控制箱组成，该装置利用粉碎装置、双进口、联通的双集水箱及双排污泵等部件，可以巧妙地实现不停机进行检修保养的工作，解决传统的污水提升器难以解决的堵塞卡死现象，保障了整套设备的安全运行。

Our company has developed a strong crushing non-clogging self-cleaning sewage lifting device without shutdown maintenance 2 stainless steel water collecting tank, pulverizer, 1 large channel sewage pump, 1 cutting sewage pump, water inlet gate valve of water collecting tank, water pump inlet gate valve, water pump outlet Gate valve, water pump outlet check valve, collecting water tank connection gate valve, backwash device, self-cleaning device, water outlet pipeline, level gauge, control box, the device With crushing device, double inlet, unicom double set water tank and double sewage pump and other components, can skillfully realize the work of maintenance without stopping, solve the traditional. The sewage elevator is difficult to solve the blockage blockage phenomenon, to ensure the safe operation of the whole equipment.

设备外形图

EQUIPMENT OUTLINE DRAWING



- 1 — 1#集水箱进水管闸阀
- 2 — 粉碎装置
- 3 — 1#不锈钢集水箱
- 4 — 1#水泵进水口闸阀
- 5 — 1#大通道式排污泵
- 6 — 水泵出水管止回阀
- 7 — 水泵出水管闸阀
- 8 — 集水箱连接管闸阀

- 9 — 2#集水箱进水管闸阀
- 10 — 2#不锈钢集水箱
- 11 — 2#水泵进水口闸阀
- 12 — 2#切割式排污泵
- 13 — 1#集水箱液位传感器
- 14 — 2#集水箱液位浮球
- 15 — 集水箱自清洁装置
- 16 — 集水箱反冲洗装置
- 17 — 出水总管

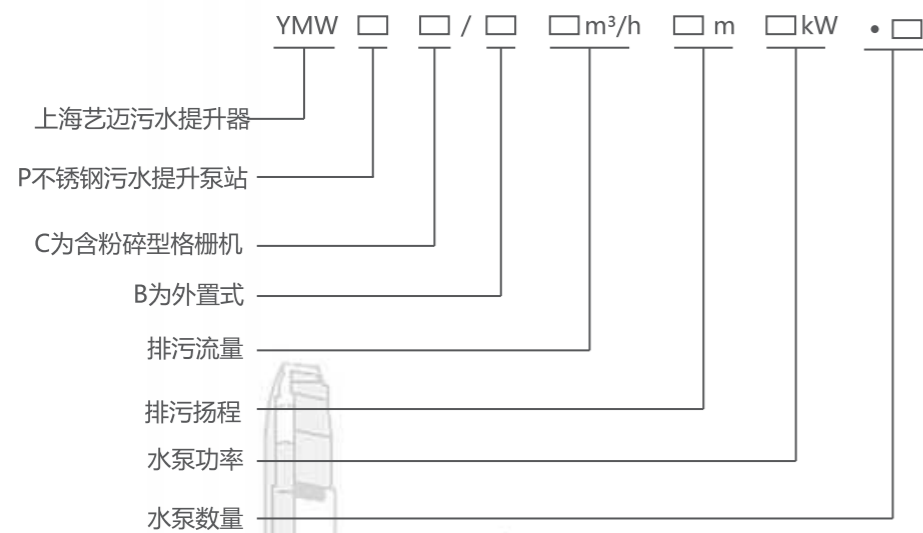
设备工作原理

WORKING PRINCIPLE OF EQUIPMENT

- 当设备正常运行时，1#进水口闸阀1开启，2#进水口闸阀9关闭，集水箱连接闸阀8开启。
When the equipment is running normally, 1# inlet gate valve 1 is open, 2# inlet gate valve 10 is closed, and the collecting tank connecting gate valve 8 is open.
- 正常情况下污水污物由1#进水口经粉碎装置2处理后进入1#不锈钢集水箱3内，污水污物中的污物被粉碎成6-8mm的颗粒，
随同污水储存在1#不锈钢集水箱3和2#不锈钢集水箱10内。
Under normal circumstances, sewage sewage from the 1# inlet through the grinding device 2 after treatment into 1# stainless steel collection tank 3, sewage sewage sewage is crushed into 6-8mm particles,Storage with sewage in 1# stainless steel collecting tank 3 and 2# stainless steel collecting tank 10.
- 当不锈钢箱体内污水液位达到箱体内液位传感器设定的启泵液位时，优先启动大通道式排污泵。
When the sewage level in the stainless steel body reaches the starting pump level set by the liquid level sensor in the box body, the large channel sewage pump is preferentially started.
- 粉碎后的污物颗粒随污水经水泵输送到市政排污管网。
The crushed dirt particles are transported to the municipal sewage pipe network along with the sewage by water pump.
- 当1号不锈钢集水箱3或粉碎装置2出现故障时，关闭1#进水口闸阀1和集水箱连接闸阀8，同时打开2#进水口闸阀9，污水污物进入2#不锈钢集水箱10内，经2#集水箱出口的切割式排污泵12处理后输送到市政排污管网。
When no. 1 stainless steel collecting tank 3 or comminution device 2 failure, close 1# inlet gate valve 1 and collecting tank connecting gate valve 8, open 2# inlet gate valve 9, sewage pollution , The material enters 2# stainless steel collecting tank 10, and is transported to municipal sewage pipe
- 故障维修结束，设备正常运行后及时恢复到1#进水口闸阀1开启，2#进水口闸阀9关闭，集水箱连接闸阀8开启的状态。
After fault maintenance, the equipment shall be restored to the state of 1# inlet gate valve 1 open, 2# inlet gate valve 9 closed and collecting tank connecting gate valve 8 open in time after normal operation.

型号定义

MODEL DEFINITION



性能参数及安装尺寸

PERFORMANCE PARAMETERS AND INSTALLATION DIMENSIONS

序号	规格型号	流量 (m ³ /h)	扬程 (m)	配套功率 (kW)	进水管直径 (mm)	出水管直径 (mm)	L (mm)	B (mm)	H (mm)
1	YMWP/B20-15-3	20	15	3	100	80	2300	1600	1650
2	YMWP/B20-20-3		20	3	100	80	2300	1600	1650
3	YMWP/B20-22-4		22	4	100	80	2300	1600	1650
4	YMWP/B20-25-5.5		25	5.5	100	80	2580	1700	1800
5	YMWP/B20-32-5.5		32	5.5	100	80	2580	1700	1800
6	YMWP/B25-15-3	25	15	3	100	80	2300	1600	1650
7	YMWP/B25-20-4		20	4	100	80	2300	1600	1650
8	YMWP/B25-25-5.5		25	5.5	100	80	2580	1700	1800
9	YMWP/B25-30-7.5	30	30	7.5	100	80	2580	1700	1800
10	YMWP/B30-15-3		15	3	100	100	2300	1600	1650
11	YMWP/B30-18-4		18	4	100	100	2300	1600	1650
12	YMWP/B30-22-5.5		22	5.5	100	100	2580	1700	1800
13	YMWP/B30-28-7.5	40	28	7.5	100	100	2580	1700	1800
14	YMWP/B40-12-3		12	3	150	100	2300	1600	1650
15	YMWP/B40-15-4		15	4	150	100	2300	1600	1650
16	YMWP/B40-20-5.5	50	20	5.5	150	100	2580	1700	1800
17	YMWP/B40-25-7.5		25	7.5	150	100	2580	1700	1800
18	YMWP/B50-18-7.5		18	5.5	150	100	2580	1700	1800
19	YMWP/B50-22-7.5		22	7.5	150	100	2580	1700	1800

注：YMWPG重载切割要比表中水泵功率高一个档次，如表中标注5.5Kw，重载切割需选用7.5Kw。（水泵数量均为2台）

S/N	Model	Flow (m ³ /h)	Lift (m)	Power (kW)	Inlet pipe diameter (mm)	Outlet pipe diameter (mm)	L (mm)	B (mm)	H (mm)
1	YMWP/B20-15-3	20	15	3	100	80	2300	1600	1650
2	YMWP/B20-20-3		20	3	100	80	2300	1600	1650
3	YMWP/B20-22-4		22	4	100	80	2300	1600	1650
4	YMWP/B20-25-5.5		25	5.5	100	80	2580	1700	1800
5	YMWP/B20-32-5.5		32	5.5	100	80	2580	1700	1800
6	YMWP/B25-15-3	25	15	3	100	80	2300	1600	1650
7	YMWP/B25-20-4		20	4	100	80	2300	1600	1650
8	YMWP/B25-25-5.5		25	5.5	100	80	2580	1700	1800
9	YMWP/B25-30-7.5	30	30	7.5	100	80	2580	1700	1800
10	YMWP/B30-15-3		15	3	100	100	2300	1600	1650
11	YMWP/B30-18-4		18	4	100	100	2300	1600	1650
12	YMWP/B30-22-5.5		22	5.5	100	100	2580	1700	1800
13	YMWP/B30-28-7.5	40	28	7.5	100	100	2580	1700	1800
14	YMWP/B40-12-3		12	3	150	100	2300	1600	1650
15	YMWP/B40-15-4		15	4	150	100	2300	1600	1650
16	YMWP/B40-20-5.5	50	20	5.5	150	100	2580	1700	1800
17	YMWP/B40-25-7.5		25	7.5	150	100	2580	1700	1800
18	YMWP/B50-18-7.5		18	5.5	150	100	2580	1700	1800
19	YMWP/B50-22-7.5		22	7.5	150	100	2580	1700	1800

Note :YMWPG Heavy-duty Cutting Should Be One Grade Higher Than The Pump Power In The Table, As Marked 5.5kw In The Table, And 7.5kw Should Be Used For Heavy-duty Cutting.(The number of water pumps is 2)

内置式不锈钢污水提升器

BUILT IN STAINLESS STEEL SEWAGE ELEVATOR



适用范围：常规的地下室、车库等。
Scope of application: Regular basement garage, etc.

产品组成：污水提升器是由304集水箱、重载切割泵、自动耦合装置、止回阀、排气口、污水的进、出口、放空口以及控制柜组成。

Product composition: Sewage elevator is composed of 304 collection tank heavy duty cutting pump automatic coupling device check valve exhaust port sewage inlet and outlet vent and control cabinet.

设备特点

1.堵塞几率低

设备堵塞几率很小，带自动耦合系统，清理维护方便。

2.智能控制

污水提升器所有标准配置均含有自动控制器，可编程控制器兼具了手动、自动功能。在设备中，采用电子液位系统，更加提高液位控制的灵敏度，反应时间快，具有停泵液位、起泵液位、超高液位控制，把故障率降到最低。

3.环保节能

使用较小的水泵就可以实现同样流量和扬程的需求，既节省了电能，又延长了水泵的使用寿命。在电子液位控制系统下进行工作，当水箱中蓄水量达到一定高度水泵自动启动，既减少了水泵的启动率，又节省了电能，实现环保的真正品质。

4.材质优良，外形美观

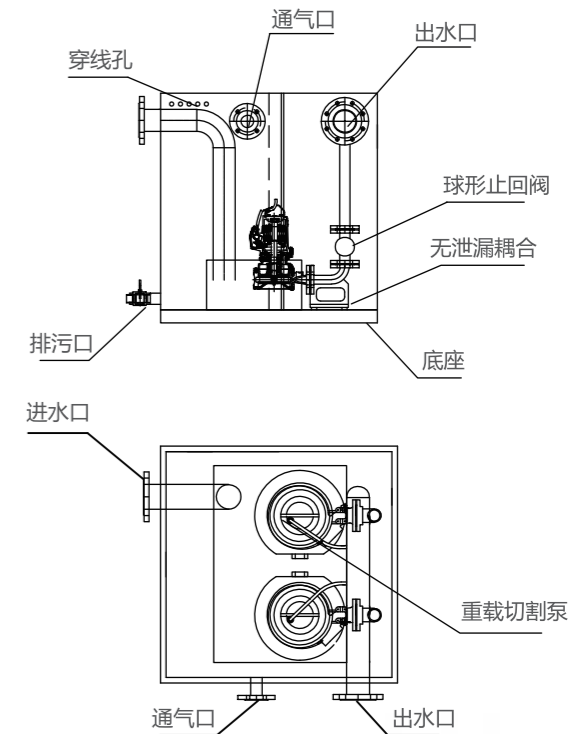
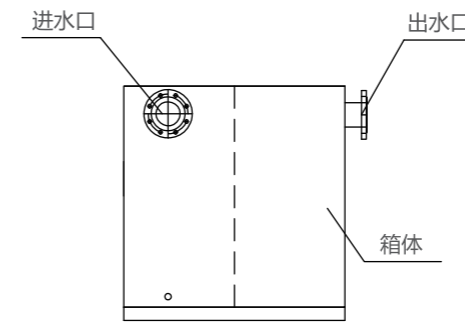
设备采用304不锈钢板材制成，防腐耐用。水泵采用国内外一线品牌，双泵相互交替工作。设备的密封式工艺，即实现了无异味外溢的情况，外形更加美观小巧。根据客户的要求，水箱的容积、进出水口的高度及方向可以自由进行设计，满足客户的需求。

5.设备安装简单

安装简单，节约宝贵时间。无需预留坑槽，不需要砖、沙、水泥砌基座。体积小，安装方便。

设备外形图

OUTLINE DRAWING OF EQUIPMENT



RODUCT FEATURES

1.Low blockage probability

It is easy to clean up with automatic coupling system

2.Intelligent control

Automatic controllers are included in all standard configurations of sewage lifters. Programmable controllers have both manual and automatic functions. In the equipment, the use of electronic liquid level system, more improve the sensitivity of liquid level control, quick reaction time, with pump stop liquid level, pump liquid level, ultra-high liquid level control, to minimize the failure rate.

3.Environmental protection and energy saving

The use of smaller pumps can achieve the same flow and head requirements, both to save electricity, and prolong the service life of the pump. Working under the electronic liquid level control system, when the water storage in the water tank reaches a certain height, the pump starts automatically, which not only reduces the starting rate of the pump, but also saves the electric energy, and realizes the real quality of environmental protection.

4.Excellent material, beautiful appearance.

The equipment is made of 304 stainless steel plate, durable and anticorrosive. The water pump adopts domestic first-line brand, and the double pumps work alternately with each other. The sealed process of the equipment, that is, to achieve no odor spillover, more beautiful and compact appearance. According to customer requirements, the volume of the water tank, inlet and outlet height and direction can be freely designed to meet customer needs.

5.Simple equipment installation

Simple installation saves valuable time. There is no need to reserve pits and grooves, and there is no need for brick, sand and cement foundations. Small size and convenient installation.

设备工作原理

内置切割式污水提升器由集水箱、重载切割泵、止回阀、排气口、污水的进、出口、放空口以及自动耦合装置组成。

- 1.含有杂质的污水由排水管线接入设备的污水流入口，进入集水箱。
- 2.集水箱内设有液位传感器，当集水箱中污水液位到达设定的上限值时，自动控制污水泵起动，将杂物切碎连同污水一同经污水排出口输送到室外化粪池或城市污水管道，当液位降低到设定的下限值时污水泵自动停止运行。
- 3.配置多台水泵并联运行时，无需停机检修，确保排污不间断。
- 4.在箱体内设有导流槽，杂物通过导流槽输入到水泵入口端，水经过隔栏进入箱体，当水泵启动的时候，水流反向回到入口端，把杂物带入水泵进行研磨切割，排入管网。
- 5.控制箱内采用可编程控制器为核心控制，其工业级的高品质及可靠性充分保证了系统的稳定性。控制程序综合了我公司多年的给排水工程设计经验，根据液位检测装置采集的信号自动控制两台污水泵以最优化的起动次数及运行时间交替工作，最大限度地保证系统运行的可靠性及水泵的使用寿命。

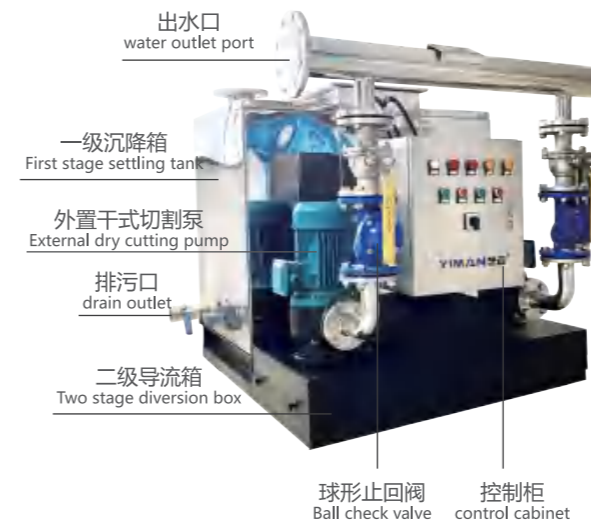
WORKING PRINCIPLE OF EQUIPMENT

The built-in cutting sewage elevator is composed of the inlet and outlet emptying ports of the sewage of the collecting tank, crushing and cutting pump, check valve, exhaust port and automatic coupling device .

1. Sewage containing impurities from the drainage pipeline into the sewage inflow port of the equipment, into the collection tank.
- 2.The collecting tank is equipped with a liquid level sensor. When the sewage level in the collecting tank reaches the set upper limit, the sewage pump will be automatically controlled to start, and the sundries will be shredded together with sewage and transported to the outdoor septic tank or urban sewage pipe through the sewage discharge outlet. When the liquid level is reduced to the set lower limit, the sewage pump will automatically stop running.
- 3.When multiple water pumps are configured to run in parallel, there is no need to stop for maintenance to ensure uninterrupted sewage discharge.
- 4.In the box body is provided with a diversion groove, debris through the diversion groove input to the pump inlet end, water through the bar into the box, when the pump starts, the water flow back to the inlet end, the debris into the pump for grinding and cutting, discharge into the pipe network.
- 5.The control box adopts programmable controller as the core control, its industrial high quality and reliability to fully ensure the stability of the system control program integrated with my company's years of water supply and drainage engineering design experience, according to the signal collected by the liquid level detection device automatic control of two sewage pumps to optimize the starting times and running time Work alternately to ensure the reliability of the system and the service life of the pump to the maximum extent.

外置式不锈钢污水提升器/（可含粉碎）

EXTERNAL STAINLESS STEEL SEWAGE ELEVATOR /(INCLUDING CRUSHING)



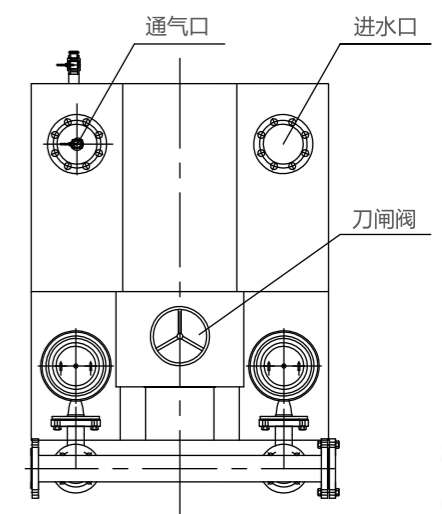
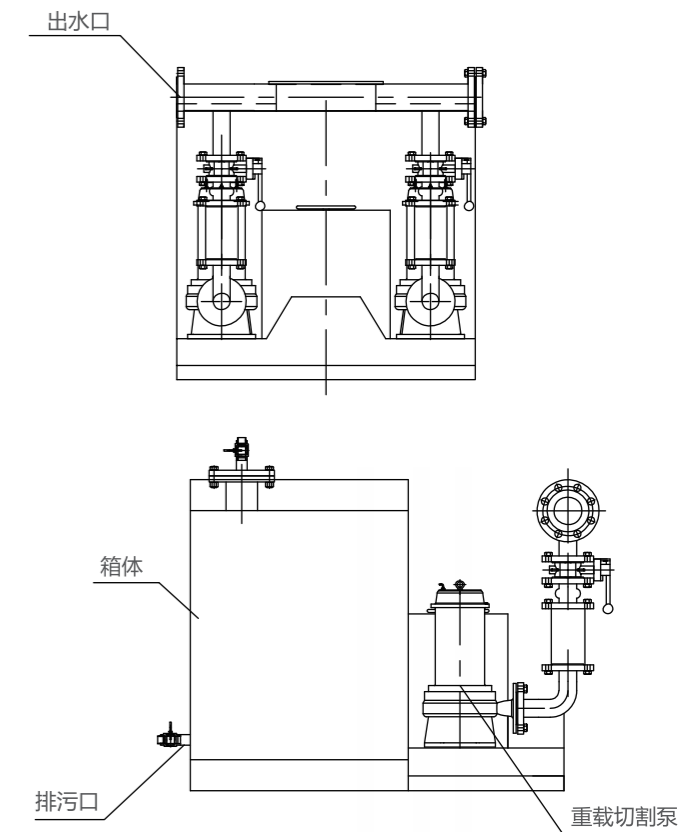
设备特点

PRODUCT FEATURES

- 1.安全密闭，无异味散发。
- 2.二级沉降、排污更彻底。
- 3.独特的导流装置、水泵真正无堵塞、运行更可靠。
- 4.灵活多变的输入、输出接口。
- 5.整体安装，方便快捷。
- 6.超静音运行。
- 7.选择多泵运行时，节能明显。
- 8.箱体采用不锈钢材料。
- 9.配置外置干式切割泵，切割有力，免清掏，检修方便。

1. Safe and sealed, no peculiar smell.
2. Secondary settlement and sewage discharge are more thorough.
3. The unique diversion device and water pump are truly non blocking and operate more reliably.
- 4.Flexible input and output interface.
5. Integral installation, convenient and quick.
6. Ultra silent operation.
7. Choose multiple pump operation, energy saving is obvious.
8. The box body is made of stainless steel.
- 9.Equipped with an external dry cutting pump, the cutting is powerful, free of cleaning, and convenient for maintenance.

适用范围：适用于地铁站和人流密集，杂物复杂的场所。
Scope of application: Suitable for subway stations and crowded places with complicated sundries.



设备工作原理

WORKING PRINCIPLE OF EQUIPMENT

外置式不锈钢污水提升器是由沉降箱、干式切割泵、止回阀、排气口、污水的进、出口以及放空口组成。

When the equipment is running normally, 1# inlet gate valve 1 is open, 2# inlet gate valve 10 is closed, and the collecting tank connecting gate valve 8 is open.

1.含有杂质的污水由排水管线接入设备的污水流入口，进入一级沉降箱。

The sewage containing impurities is connected to the sewage inflow port of the equipment by the drainage pipeline and enters the first stage settlement box.

2.大颗粒的固体和金属等在一级沉降箱中完成沉降，保证了切割泵的使用安全。小颗粒污物、漂浮物和一级沉降箱中腐化的污物进入二级沉降箱。

Large particles of solid and metal in the first sedimentation box to complete the settlement, to ensure the use of the cutting pump safety. Small particles, flotsam and decayed dirt from the primary settling tank enter the secondary settling tank.

3.污水污物经过二级沉降箱中独特的导流装置，流至干式切割泵附近

Sewage sludge flows through a unique diversion device in the secondary settlement box to the vicinity of the dry cutting pump.

4.一级沉降箱内设有液位传感器，当一级沉降箱中的污水液位到达设定的上限值时，自动控制二级沉降箱上的切割泵启动，

将杂物切碎连同污水一同经污水排出口送到室外化粪池或城市污水管道，当液位降低到设定的下限值时切割泵自动停止运行。

5.控制箱内采用可编程控制器为核心控制，根据液位检测装置采集的信号自动控制两台污水泵以最优化的启动次数及运行时间交替工作，最大限度地保证系统运行的可靠性及水泵的使用寿命。

The control box adopts programmable controller as the core control, according to the signal collected by the liquid level detection device automatically control two sewage pumps to optimize the starting times and running time of alternating work, to maximize the reliability of system operation and pump service life.

内置式聚乙烯 (PE) 污水提升器

BUILT-IN STAINLESS STEEL SEWAGE ELEVATOR



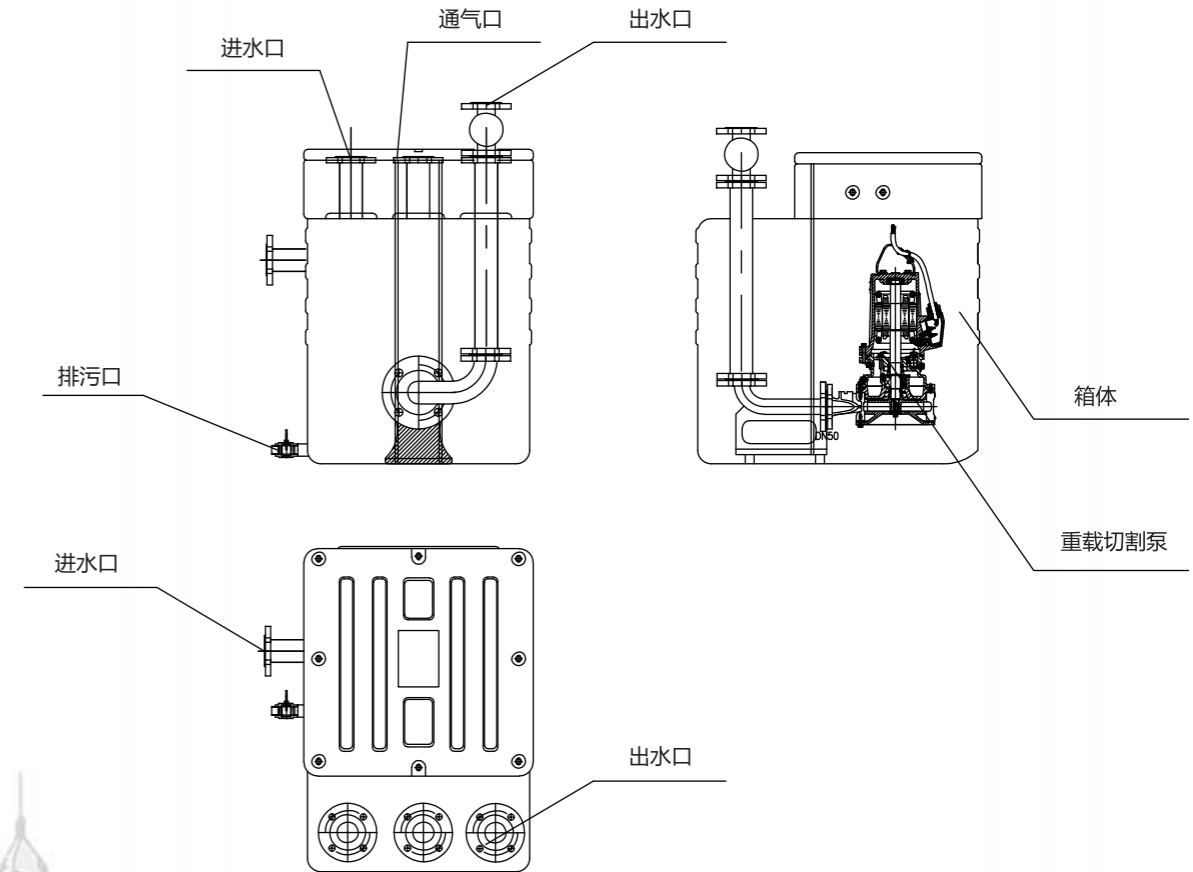
适用范围：常规的地下室、车库、别墅等。
Scope of application: Regular basement garage, etc.

产品组成：污水提升器是由聚乙烯 (PE) 材质集水箱、重载切割泵、自动耦合装置、止回阀、排气口、污水的进、出口、放空口以及控制柜组成。

Product composition: Sewage elevator is composed of 304 collection tank heavy duty cutting pump automatic coupling device check valve exhaust port sewage inlet and outlet vent and control cabinet.

设备外形图

EQUIPMENT OUTLINE DRAWING



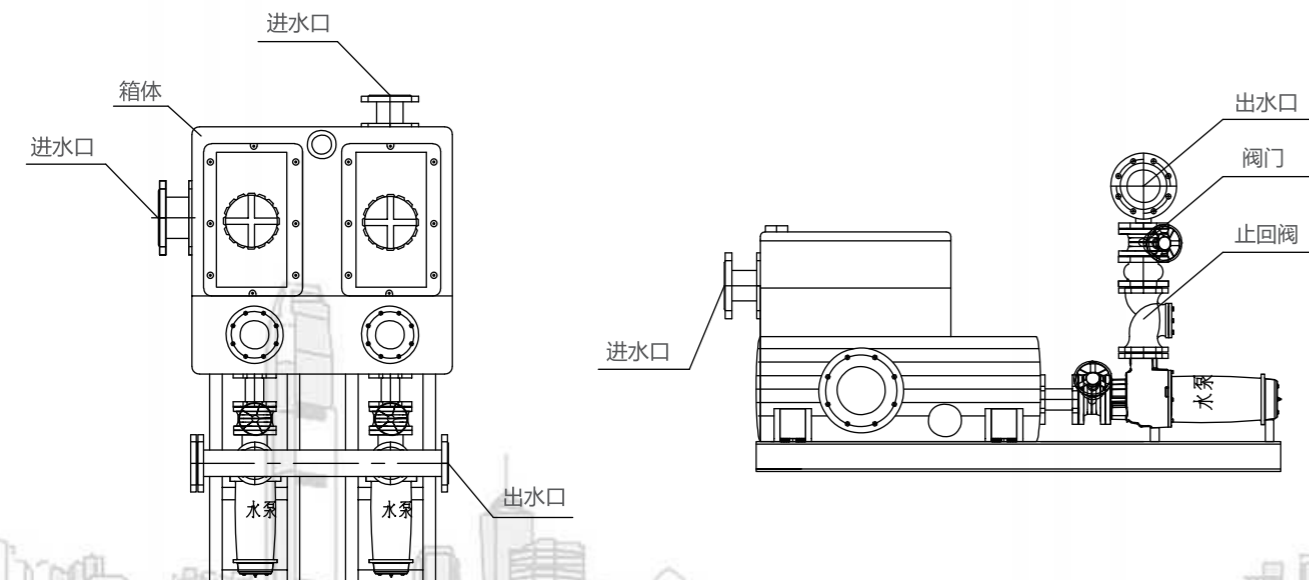


外置式聚乙烯 (PE) 污水提升器
EXTERNAL POLYETHYLENE (PE) SEWAGE ELEVATOR



适用范围：适用于别墅、住宅、公共建筑等。
Scope of application: suitable for equipment room

产品特点：PE材质密度高；多方位预留安装口；水泵具有重载切割技术；电气元器件采用进口品牌。
Product features: HIGH density PE material; Multi-directional reserved installation mouth; Water pump with heavy duty cutting technology; Electrical components are imported brands

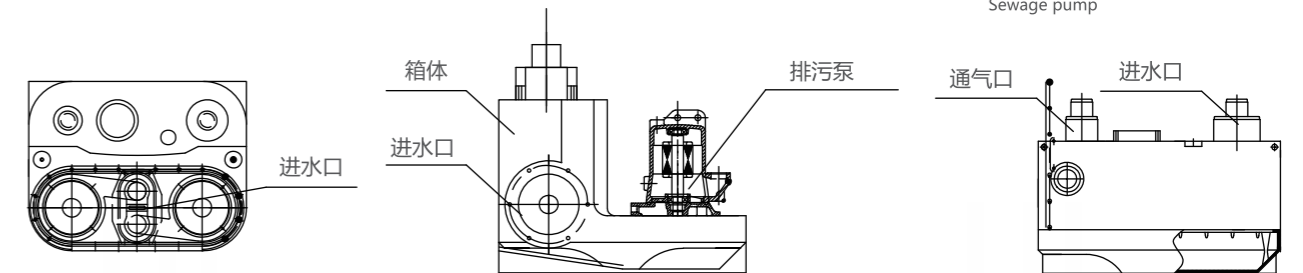
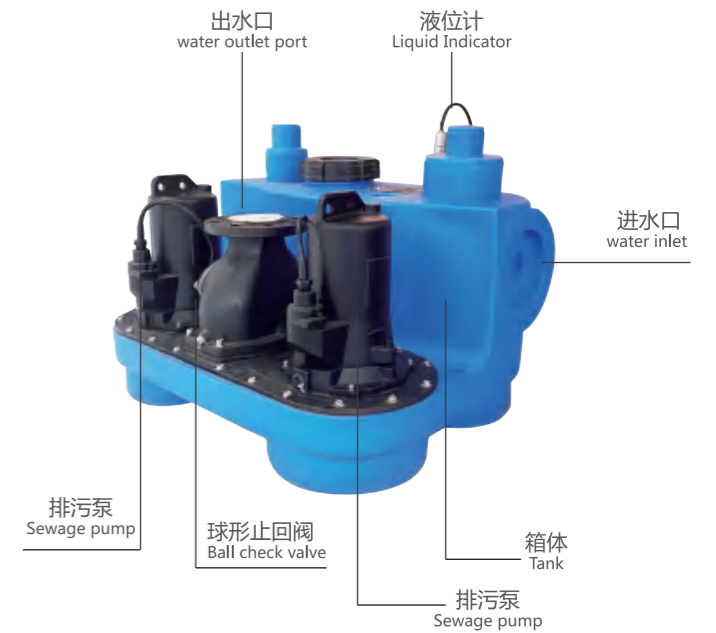


适用范围：适用于别墅和小型单体楼等。

Scope of application: It is suitable for villas and small single buildings.

产品特点：PE材质密度高；多方位预留安装口；水泵外置，维修方便；电气元器件采用进口品牌。

Product features: PE material density is high; Multi-directional reserved installation mouth; External water pump, easy maintenance; Electrical components are imported brands.



设备工作原理

WORKING PRINCIPLE OF EQUIPMENT

外置式聚乙烯 (PE) 污水提升器由集水箱、排污泵、止回阀、排气口、污水的进、出口、放空口等组成。

The external polyethylene (PE) sewage elevator is composed of collecting tank, sewage pump, check valve, exhaust port, sewage inlet, outlet, air outlet and so on.

1. 含有杂质的污水由排水管线接入设备的污水流入口，进入集水箱。

Sewage containing impurities from the drainage pipeline into the sewage inflow port of the equipment, into the collection tank.

2. 集水箱内设有液位传感器，当集水箱中污水液位到达设定的上限值时，自动控制污水泵启动，将杂物切碎连同污水一同经污水排出口输送到室外化粪池或城市污水管道，当液位降低到设定的下限值时污水泵自动停止运行。

The collecting tank is equipped with a liquid level sensor. When the sewage level in the collecting tank reaches the set upper limit, the sewage pump will be automatically controlled to start, and the sundries will be shredded together with sewage and transported to the outdoor septic tank or urban sewage pipe through the sewage discharge outlet. When the liquid level is reduced to the set lower limit, the sewage pump will automatically stop running.

3. 配置多台水泵并联运行时，无需停机检修，确保排污不间断。

When multiple water pumps are configured to run in parallel, there is no need to stop for maintenance to ensure uninterrupted sewage discharge.

4. 定期打开排空阀门，防止集水箱沉淀。

Open the emptying valve regularly to prevent precipitation in the collecting tank.

性能参数

PERFORMANCE PARAMETER

序号	泵站型号	流量 (m³/h)	扬程 (M)	功率 (Kw)	电压 (V)	进口管径 (DN)	出口管径 (DN)
1	YMWP/A(B)15-15-1.5*2	15	15	1.5	380	80	80
2	YMWP/A(B)15-15-1.5*2	15	15	1.5	380	80	80
3	YMWP/A(B)20-7-0.75*2	20	7	0.75	380	80	80
4	YMWP/A(B)10-10-0.75*2	10	10	0.75	380	80	80
5	YMWP/A(B)20-15-1.5*2	20	15	1.5	380	80	80
6	YMWP/A(B)25-15-2.2*2	25	15	2.2	380	80	80
7	YMWP/A(B)37-13-3*2	37	13	3	380	100	100
8	YMWP/A(B)40-7-2.2*2	40	7	2.2	380	100	100
9	YMWP/A(B)43-13-3*2	43	13	3	380	100	100
10	YMWP/A(B)40-15-4*2	40	15	4	380	100	100
11	YMWP/A(B)80-10-4*2	80	10	4	380	100	100
12	YMWP/A(B)110-10-5.5*2	110	10	5.5	380	125	125
13	YMWP/A(B)100-15-7.5*2	100	15	7.5	380	125	125
14	YMWP/A(B)130-15-11*2	130	15	11	380	125	125
15	YMWP/A(B)145-9-7.5*2	145	9	7.5	380	125	125
16	YMWP/A(B)15-25-2.2*2	15	25	2.2	380	80	80
17	YMWP/A(B)18-30-3*2	18	30	3	380	80	80
18	YMWP/A(B)25-35-5.5*2	25	35	5.5	380	80	80
19	YMWP/A(B)20-40-7.5*2	20	40	7.5	380	80	80
20	YMWP/A(B)25-30-4*2	25	30	4	380	80	80
21	YMWP/A(B)30-40-7.5*2	30	40	7.5	380	80	80
22	YMWP/A(B)35-50-11*2	35	50	11	380	80	80
23	YMWP/A(B)35-60-15*2	35	60	15	380	80	80
24	YMWP/A(B)65-25-7.5*2	65	25	7.5	380	100	100
25	YMWP/A(B)85-20-7.5*2	85	20	7.5	380	100	100
26	YMWP/A(B)100-25-11*2	100	25	11	380	125	125
27	YMWP/A(B)100-30-15*2	100	30	15	380	125	125
28	YMWP/A(B)100-35-18.5*2	100	35	18.5	380	125	125
29	YMWP/A(B)130-20-15*2	130	20	15	380	125	125

S/N	Model	Traffic (m³/h)	Lift (M)	Power (Kw)	Voltage (V)	Inlet pipe diameter (DN)	Outlet pipe diameter (DN)
1	YMWP/A(B)15-15-1.5*2	15	15	1.5	380	80	80
2	YMWP/A(B)15-15-1.5*2	15	15	1.5	380	80	80
3	YMWP/A(B)20-7-0.75*2	20	7	0.75	380	80	80
4	YMWP/A(B)10-10-0.75*2	10	10	0.75	380	80	80
5	YMWP/A(B)20-15-1.5*2	20	15	1.5	380	80	80
6	YMWP/A(B)25-15-2.2*2	25	15	2.2	380	80	80
7	YMWP/A(B)37-13-3*2	37	13	3	380	100	100
8	YMWP/A(B)40-7-2.2*2	40	7	2.2	380	100	100
9	YMWP/A(B)43-13-3*2	43	13	3	380	100	100
10	YMWP/A(B)40-15-4*2	40	15	4	380	100	100
11	YMWP/A(B)80-10-4*2	80	10	4	380	100	100
12	YMWP/A(B)110-10-5.5*2	110	10	5.5	380	125	125
13	YMWP/A(B)100-15-7.5*2	100	15	7.5	380	125	125
14	YMWP/A(B)130-15-11*2	130	15	11	380	125	125
15	YMWP/A(B)145-9-7.5*2	145	9	7.5	380	125	125
16	YMWP/A(B)15-25-2.2*2	15	25	2.2	380	80	80
17	YMWP/A(B)18-30-3*2	18	30	3	380	80	80
18	YMWP/A(B)25-35-5.5*2	25	35	5.5	380	80	80
19	YMWP/A(B)20-40-7.5*2	20	40	7.5	380	80	80
20	YMWP/A(B)25-30-4*2	25	30	4	380	80	80
21	YMWP/A(B)30-40-7.5*2	30	40	7.5	380	80	80
22	YMWP/A(B)35-50-11*2	35	50	11	380	80	80
23	YMWP/A(B)35-60-15*2	35	60	15	380	80	80
24	YMWP/A(B)65-25-7.5*2	65	25	7.5	380	100	100
25	YMWP/A(B)85-20-7.5*2	85	20	7.5	380	100	100
26	YMWP/A(B)100-25-11*2	100	25	11	380	125	125
27	YMWP/A(B)100-30-15*2	100	30	15	380	125	125
28	YMWP/A(B)100-35-18.5*2	100	35	18.5	380	125	125
29	YMWP/A(B)130-20-15*2	130	20	15	380	125	125

注：YMWP重载切割要比表中水泵功率高一个档次，如表中标注5.5Kw，重载切割需选用7.5Kw (箱体尺寸可根据现场工况定制)。

Note: ymwp Heavy-duty Cutting Should Be One Grade Higher Than The Pump Power In The Table, As Marked 5.5kw In The Table, And 7.5kw Should Be Used For Heavy-duty Cutting. (Box Size Can Be Customized According To Site Conditions)

智慧污水提升

SMART SEWAGE ASCENSION



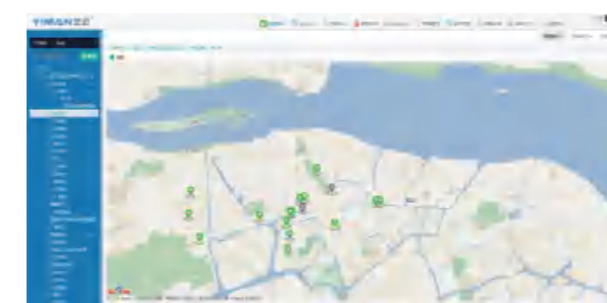
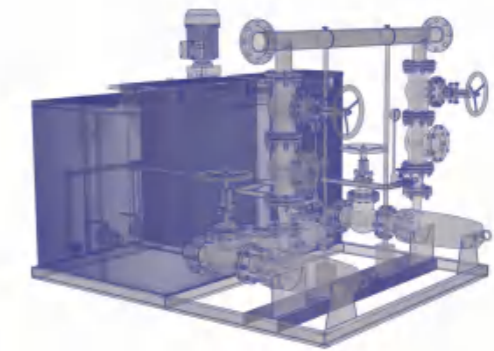
艺迈自主研发的智慧污水提升行业专用云平台，通过移动端与高精度定位设备的无缝对接，提供空间信息动态分析和高效处理的功能，体验全生命周期管理，通过桌面端、网页端和移动端综合应用，实现实时在线监控，使设备智能化运行，达到无人值守。

Yimai's self-developed cloud platform for smart sewage ascension industry seamlessly connects the mobile terminal with high-precision positioning equipment, Provide dynamic analysis and efficient processing of spatial information, experience the whole life cycle management, through the desktop and web, And mobile terminal integrated application, realize real-time online monitoring, make the equipment intelligent operation, achieve unattended.



1.大数据收集：动力设备运行状态、液位、泵状态等参数的远程数据传输
Big data collection: remote data transmission of power equipment operating status, liquid level, pump status and other parameters.

2.远程监控及调度：24小时实时在线连续采集监测传感器及控制器数据，随时可以查阅和分析历史数据
Remote monitoring and scheduling: 24-hour real-time online continuous collection of monitoring sensor and controller data, Historical data can be accessed and analyzed at any time.



3.运维数据分析存储,系统提供远程管理维护功能，用户根据管理需要实现对设备的数据库管理，备品备件和人员管理等全生命周期管理。
The system provides the function of remote management and maintenance, and the user can manage the equipment according to the management needs Database management, spare parts and personnel management, etc.

常见故障分析及维修

COMMON FAILURE ANALYSIS AND MAINTENANCE

故障	原因	维修方法
水箱注水到启动线后污水提升泵的电动机不运行	电源没有接通 保险丝熔断 安全开关或热过载开关跳闸	检查电源接通状况 更换保险丝 断开安全开关并等待3—5分钟 到热过载开关重新启动
污水提升泵的电动机有响声，但不正常工作	叶轮故障	断开安全开关并检查叶轮旋转是否正常
污水提升泵的电动机运转连续不稳或有规律的间断	单元进水口泄露 排水水管回流单元中	检查泄露的水龙头或水箱 检查内部的止回阀
污水提升泵的电动机正常工作但不排水	污水提升泵被闭塞 污水提升泵中有空气 排水管（内部）堵塞	排除障碍 排除障碍 检查水箱通风道是否顺畅
污水提升泵排水缓慢	过滤网堵塞 通气道堵塞 排水管插入排水接头太深 排水管太长或弯曲过甚	拆开过滤网进行清理 检查内部进气孔是否被堵塞 减少排水管长度和管道弯曲 增大排水管径（最大32mm） 增大弯曲半径
污水提升泵出现咔哒噪声，但是废物已被清除	固状物撞击叶轮或切割刀片	清除固状物
污水提升泵散发臭味	碳网过滤器严重污染	更换碳网过滤器

THE FAULT	CAUSE	MAINTENANCE METHODS
The motor of the sewage lift pump does not run after the water tank is injected into the starting line	The power is not connected. The fuse blew out Safety switch or thermal overload switch trip	Check the power connection status Replace fuse Turn off the safety switch and wait 3-5 minutes Switch to thermal overload to restart
The motor of the sewage lift pump is making noise,But it doesn't work properly	Impeller failure	Turn off the safety switch and check the impeller rotation is normal
The motor operation of sewage lifting pump is unstable or regularly interrupted	Unit inlet leakage The drain water returns to the unit	Check for leaking faucets or water tanks Check internal check valves
The motor of the sewage lift pump works normally but does not drain water	The sewage lift pump is blocked There is air in the sewage lift pump The drain is blocked (in)	The obstacles The obstacles Check whether the water tank ventilation duct is smooth
The sewage lift pump drains slowly	Filter blockage Airway blockage The drainpipe is inserted too deep into the drainpipe connector Drainpipes are too long or bent	Remove the filter for cleaning Check if internal air intake is blocked Reduce drain length and pipe bending Increase drainage pipe diameter (Max. 32mm) Increase bending radius
The sewage lift pump is clicking, but the waste has been removed	Impingement of solids on impeller or cutting blade	Scavenging solids
Sewage lift pump gives off a foul smell	Carbon mesh filters are heavily polluted	Replace the carbon mesh filter

部分项目案例 SOME PROJECT CASES

地铁/铁路 SUBWAY/RAILWAY



上海地铁11号线
Shanghai Metro Line 11



上海地铁12号线
Shanghai Metro Line 12



上海地铁2号线威宁路站
Weining Road Station, Shanghai Metro Line 2



石家庄地铁1号线、3号线
Shijiazhuang Subway Line 1, Line 3



合肥地铁2号线长丰路站
Hefei Metro Line 2 Changfeng Road Station



中铁十二局集团京雄城际铁路雄安站
Beijing Xiongan Intercity Railway Station of
China Railway 12th Bureau Group

小区住宅 RESIDENTIAL AREA



涞水县望京西府
Laishui County Wangjing West Mansion



云起苑
Yun Qi Garden



昆明艺术家园
Kunming Art Home

社会综合体 SOCIAL COMPLEX



金山方舱医院
Jinshan Makeshift Hospital



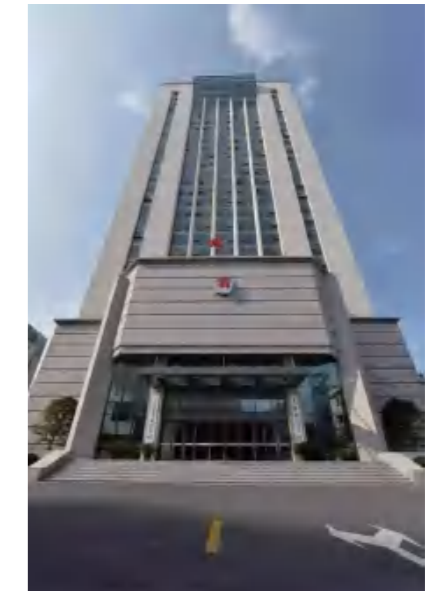
青浦方舱医院
Qingpu Makeshift Hospital



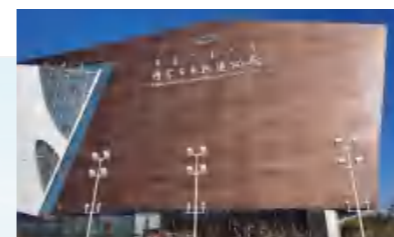
荣盛未来城
Rongsheng Future City



东旭锦江国际酒店
Dongxu Jinjiang International Hotel



上海市司法局
Shanghai Justice Bureau



自然历史博物馆
Natural History Museum



庐江新二中
Lujiang New No.2 Middle School

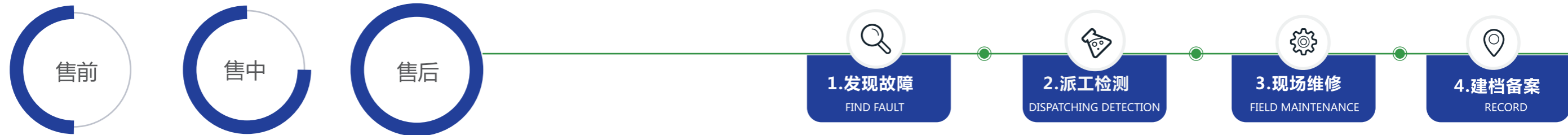


郑州市民公共文化服务中心
Zhengzhou Public Cultural Service Center

艺迈服务
YIMAI SERVICE

多元售后—辐射全国

MULTIVARIATE-SALES-RADIATION ACROSS THE COUNTRY



艺迈，着力为客户提供一种全生命周期的服务，在与您初识的那一刻，我们的服务已经悄然而至，在与您沟通的每一瞬间，我们的服务无处不在。

YIMAI FOCUSES ON PROVIDING CUSTOMERS WITH A FULL LIFE CYCLE SERVICE. THE MOMENT WE FIRST MEET YOU, OUR SERVICE HAS QUIETLY ARRIVED, AND EVERY MOMENT OF COMMUNICATION WITH YOU, OUR SERVICE IS EVERYWHERE.



产品全生命周期管理
PRODUCT LIFECYCLE MANAGEMENT

